

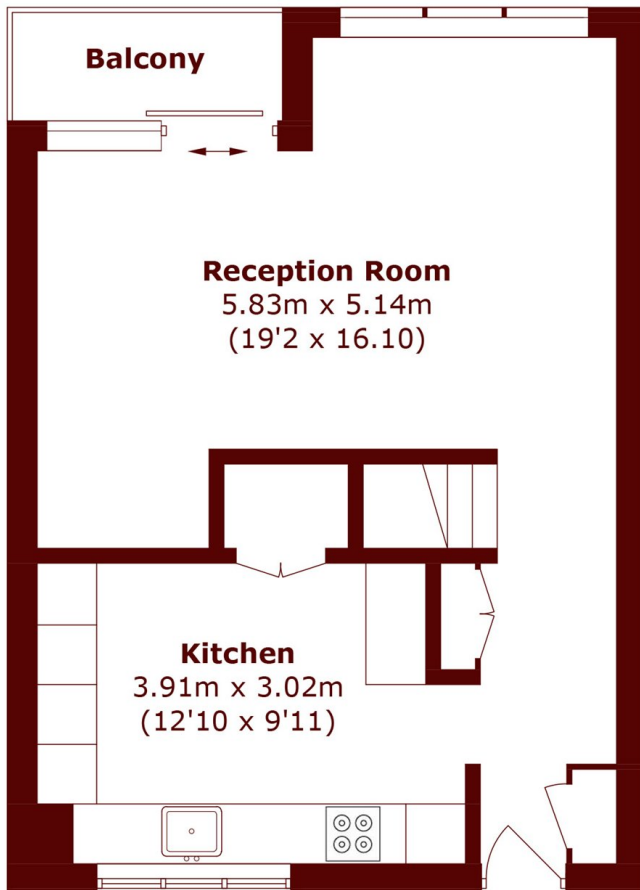


## Ivy Lodge, W11

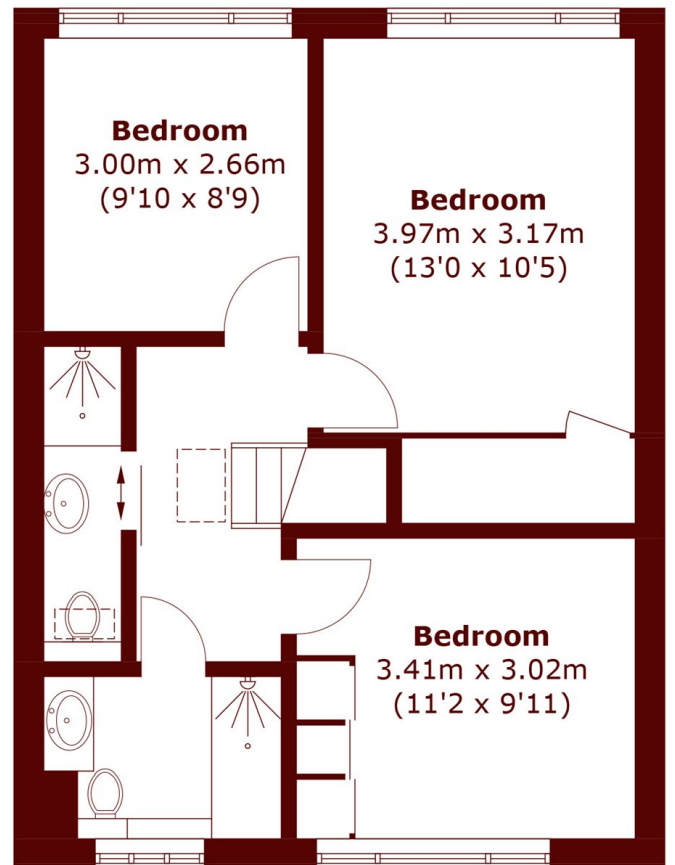
£1,250,000



- Three Double Bedrooms
- Excellent Condition
- Southerly Balcony
- Two Bathrooms
- Lift Access
- Porter



**Fourth Floor**



**Fifth Floor**

Total area (approx.): 93.5 sq. m (1006.4 sq. ft)  
Balcony : 3.0 sq. m (32.3 sq. ft)

**Marsh & Parsons Notting Hill**

2-6 Kensington Park Road,  
London, W11 3BU  
020 7313 2890