



Kensington Gardens Square, W2

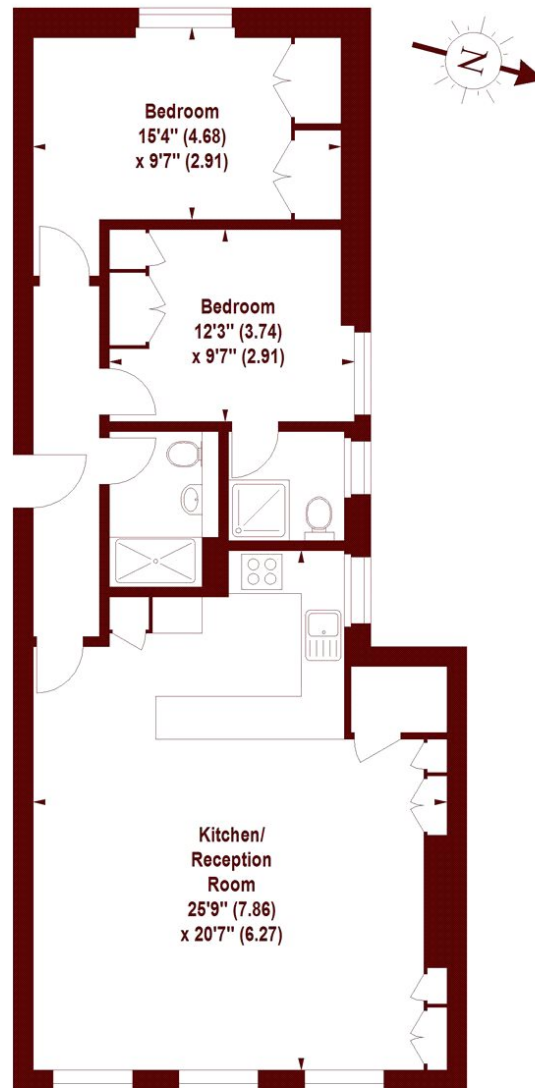
£923 per week (£3,999 pcm)

2 2 1 C

- Wonderfully Light
- Two Bathrooms
- Lift Access
- Two Double bedrooms
- Excellent Condition
- Private Communal Gardens

Kensington Gardens, W2

APPROX. GROSS INTERNAL FLOOR AREA 924 SQFT / 85.84 SQM



FOURTH FLOOR

Illustration For Identification Purposes Only. Not To Scale

*Floorplan Drawn According To RICS Guidelines
Copyright of FeaturePRO

Marsh & Parsons Notting Hill

2-6 Kensington Park Road,
London, W11 3BU
020 7313 2890