



## Ladbroke Grove, W11

£775,000

 2  1  1  E

- Bright & Spacious Reception
- Modern Open Plan Kitchen

- Two Versatile Bedrooms
- Contemporary Bathroom

- Abundant Natural Light
- Prime Notting Hill Location







## ABOUT THE PROPERTY

This stylish two-bedroom apartment spans the third and fourth floors of a Victorian conversion. Featuring an open-plan kitchen/reception, a contemporary bathroom, and expansive windows, it offers bright, modern living in a period setting.

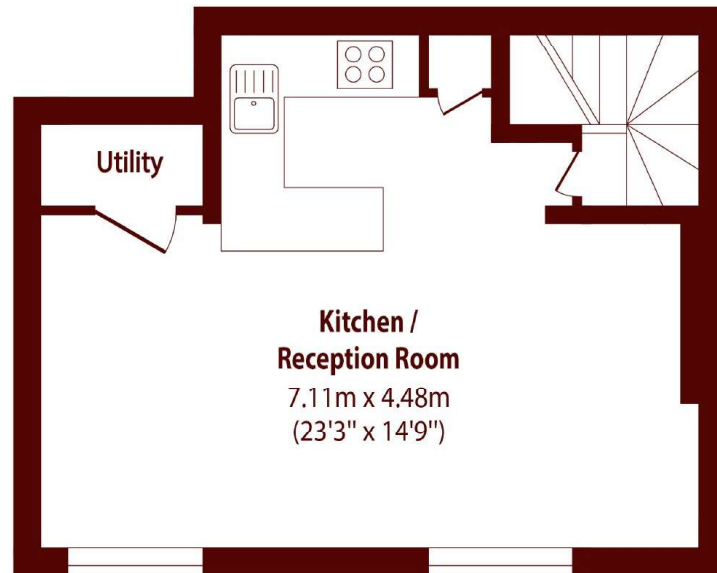
The top-floor reception space features light wood flooring, sleek white cabinetry, and integrated stainless-steel appliances, while large windows frame attractive views and flood the room with natural light.

On the floor below, two well-proportioned bedrooms offer flexibility—one with fitted wardrobes, the other ideal as a study or guest room—both finished in calming neutral tones with soft carpet underfoot.

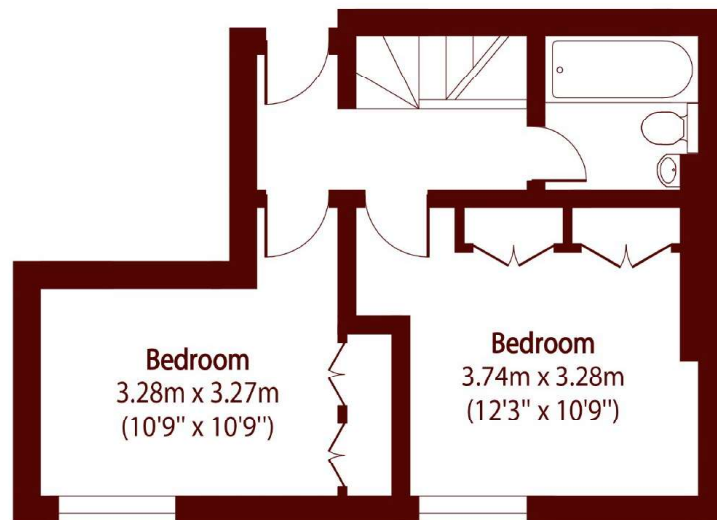
The bathroom combines modern fittings with patterned tiling, a full-sized bath, and shower screen. Blending Victorian character with contemporary style, this apartment is perfectly suited for professionals seeking a Notting Hill lifestyle.

Tucked just off Blenheim Crescent, moments from vibrant Notting Hill, this home is surrounded by cafés, boutiques, and the famous Portobello Road Market, with excellent transport links close at hand.





**Fourth Floor**



**Third Floor**

**Total area (approx): 87.72 sq m (944 sq. ft)**

**Marsh & Parsons North Kensington**

136 Lancaster Road, London,  
W11 1QU  
020 7313 8350