



Moreton Terrace Mews South, SW1V

£1,296 per week

 3  3  1  E

- Three Bedrooms
- Three Bathrooms
- Mews House
- Well Presented
- MoretonTriangle Location
- Close To Community Amenities

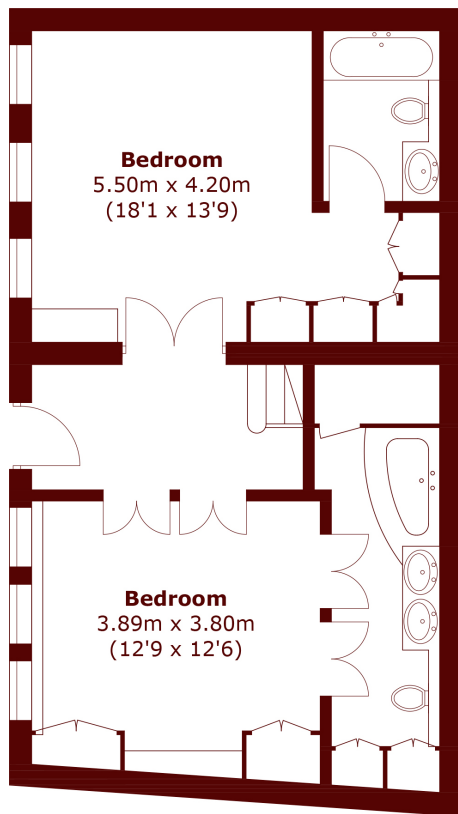


ABOUT THE PROPERTY

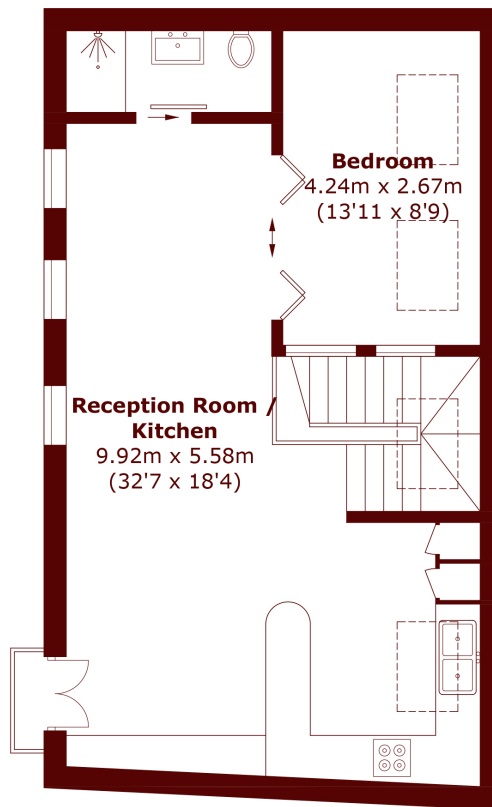
A fantastic three double bedroom mews house presented in great condition. The property comprises spacious open plan living area flooded with natural light and with large modern kitchen, two spacious double bedrooms with integrated storage and each with an en suite bathroom, third good-sized double bedroom and a third family shower room. The property further benefits from parquet wooden flooring and tiling throughout.

Moreton Terrace Mews South is a sought-after quiet location within the Moreton triangle. There are shops and cafes right on the doorstep with further amenities to be found towards Victoria or Sloane Square. Transport Links are superb with Pimlico Underground station (Victoria line) right around the corner and Victoria station (Circle, District and Victoria lines) offering National Rail and Gatwick Express services.





Ground Floor



First Floor

Total area (approx.): 111.7 sq. m (1,202.3 sq. ft)

Marsh & Parsons Pimlico & Westminster

53 Warwick Way, London,
SW1V 1QS
020 7590 0800

We aim to make our particulars both accurate and reliable. However, they are not guaranteed; nor do they form part of an offer or contract. If you require clarification on any points then please contact us, especially if you're traveling some distance to view. Please note that appliances and heating systems have not been tested and therefore no warranties can be given as to their good working order.