

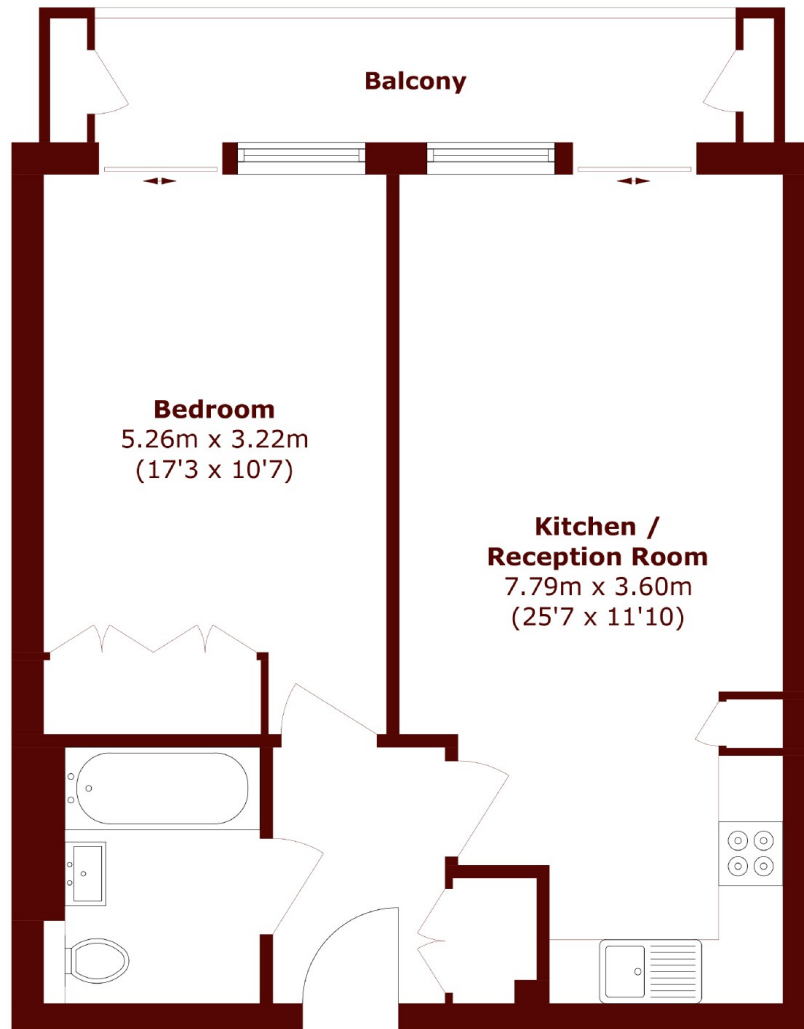


## Kimberley Road, NW6

£399,999



- South Facing Balcony
- Excellent Local Amenities
- Quiet Street
- Gated Development
- Lift Access
- Good Condition



Total area (approx.): 54.0 sq. m (581.2 sq. ft)

Balcony area (approx.): 7.9 sq. m (85.0 sq. ft)

**Marsh & Parsons Queen's Park**

56 Salusbury Road, London,  
NW6 6NN  
020 7624 4513