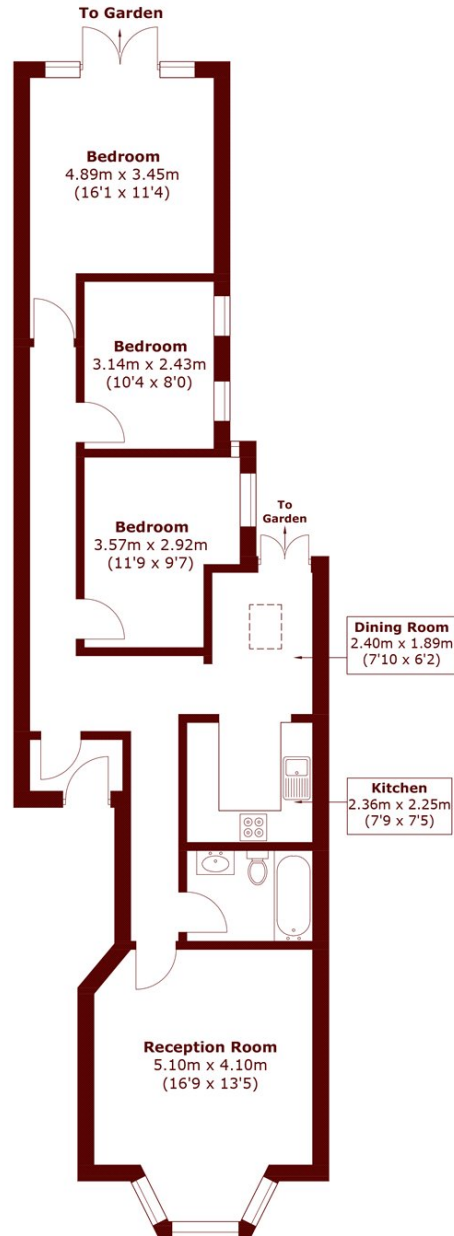


Dyne Road, NW6

£650,000

3 1 1 D

- Chain Free
- Large Private Garden
- Three Double Bedrooms
- Potential to Extend
- Excellent Transport Links
- Share of Freehold



Total area (approx.): 83.7 sq. m (900.9 sq. ft)

Marsh & Parsons Queens Park

56 Salusbury Road, London,
NW6 6NN
020 7624 4513