



Victoria Road, NW6

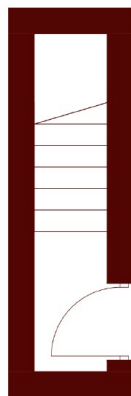
£355,000



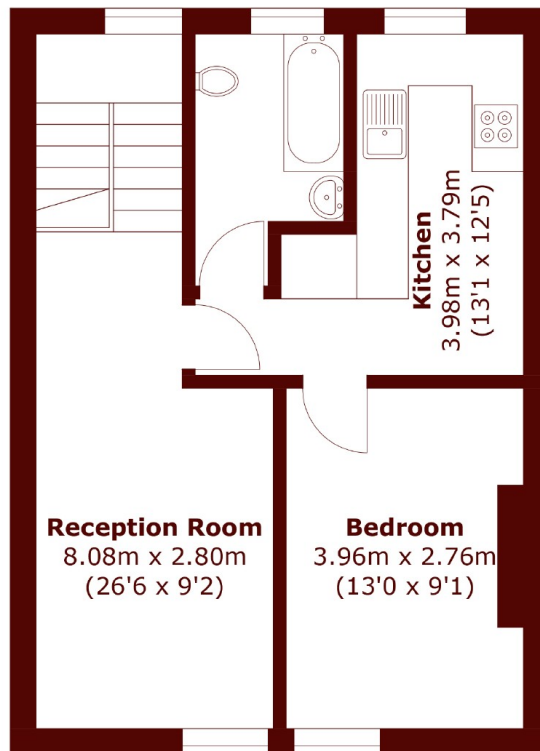
• Share of Freehold

• One Double Bedroom

• Top Floor Flat



Ground Floor



First Floor

Total area (approx.): 49.3 sq. m (530.5 sq. ft)

Marsh & Parsons Queens Park

56 Salusbury Road, London,
NW6 6NN
020 7624 4513