

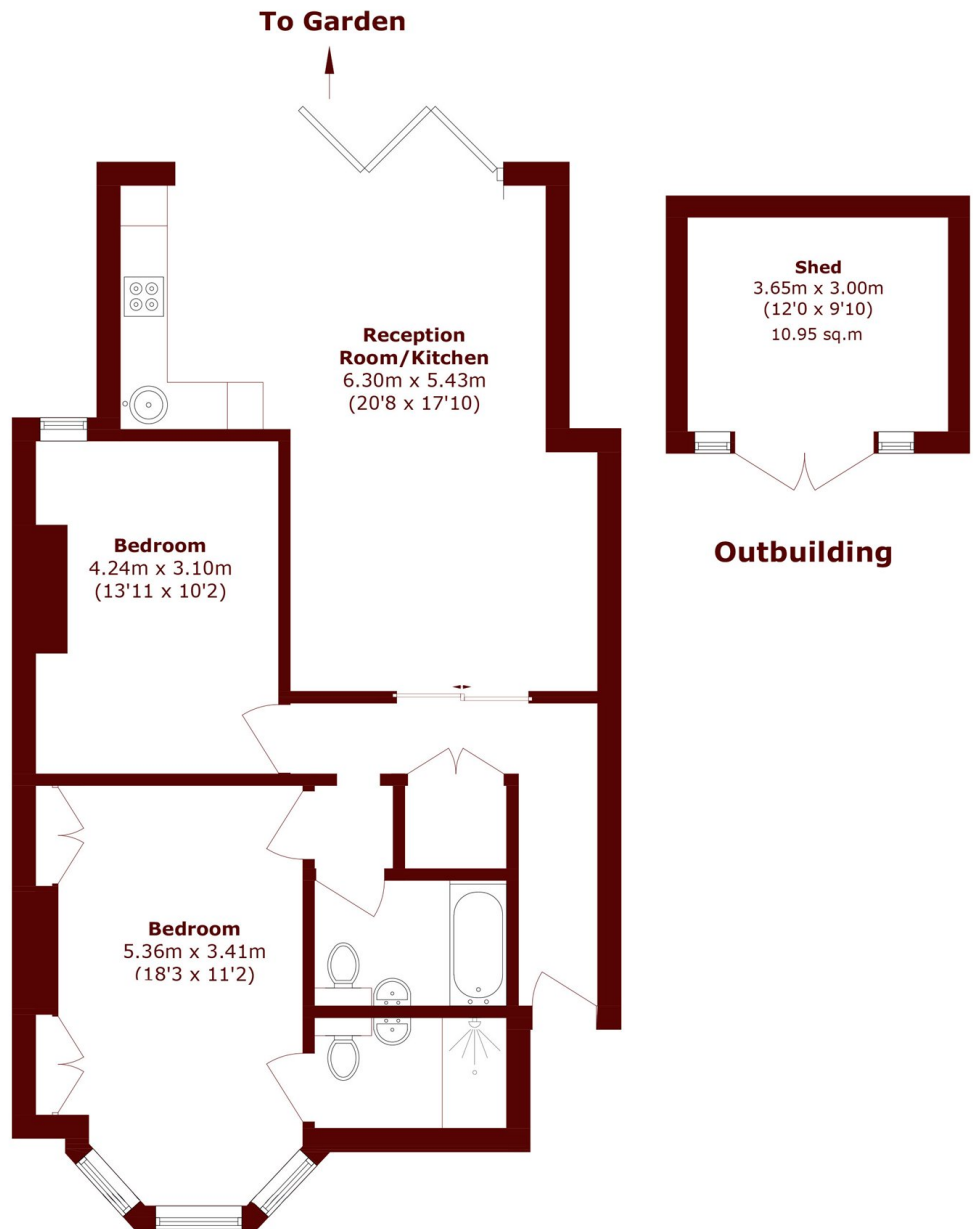


## Brondesbury Villas, NW6

£3,000 pcm



- Two Double Bedrooms
- Two Bathrooms
- South Facing Garden
- Off Street Parking
- Sought-After Area
- Great Transport Links



Total area (approx.): 80.6 sq. m (867.5 sq. ft)  
Outbuilding, not shown in orientation (approx.): 10.9 sq. m (117.3 sq. ft)

## Marsh & Parsons Queens Park

56 Salusbury Road, London,  
NW6 6NN  
020 7624 4513