



Victoria Road, NW6

£2,500 pcm



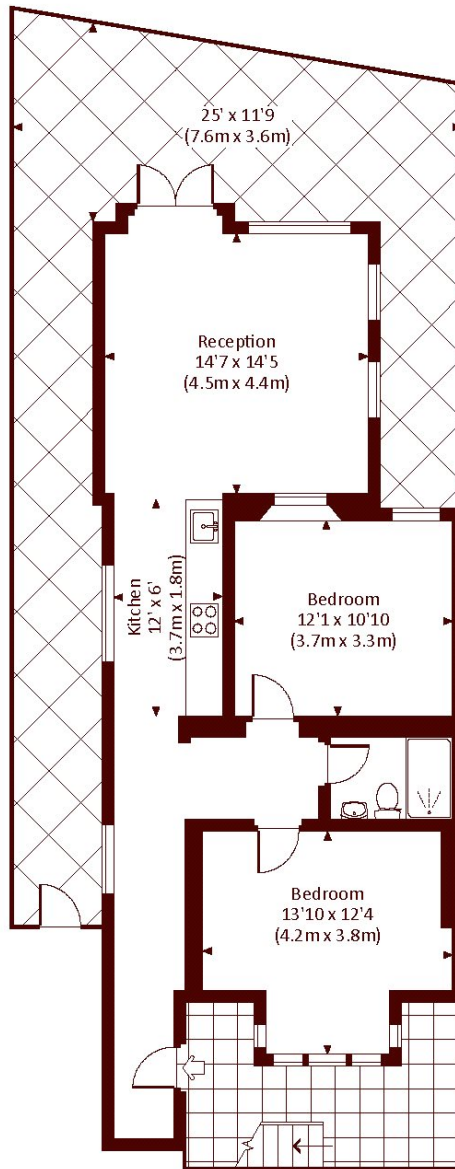
- Two double bedrooms
- Private garden

- Victorian conversion
- Modern

- Close To Transport
- Near to High Street

VICTORIA ROAD, NW6

Approx. gross internal area
759 Sq Ft. / 70.5 Sq M.



LOWER GROUND FLOOR



All measurements have been made in accordance with RICS Code of Measuring Practice which are approximate only and only for illustrative purposes. For the avoidance of doubt, Dowling Jones Design shall not be liable for any reliance on these measurements. © 2017 www.dowlingjones.com 020 7610 9933

Marsh & Parsons Queen's Park

56 Salusbury Road, London,
NW6 6NN
020 7624 4513

We aim to make our particulars both accurate and reliable. However, they are not guaranteed; nor do they form part of an offer or contract. If you require clarification on any points then please contact us, especially if you're traveling some distance to view. Please note that appliances and heating systems have not been tested and therefore no warranties can be given as to their good working order.