



## Eveline Road, CR4

£600,000

 4  2  1  B

- Freehold
- Four Bedrooms

- Off Street Parking
- Very Good Condition

- Great Transport Links
- 1,247 Sq. Ft.







## ABOUT THE PROPERTY

This fantastic house is full of natural light and boasts generous proportions throughout and high ceilings. The ground floor accommodates a large open plan living/ dining area with kitchen that offers fitted appliances. This floor also has a separate WC as well bi-fold doors that lead out into the large, partially paved private garden. The first floor has two double bedrooms, one with fitted wardrobes, and a large family bathroom. The top floor accommodates one double bedroom, and a further large double bedroom with its own en suite shower room and roof terrace.

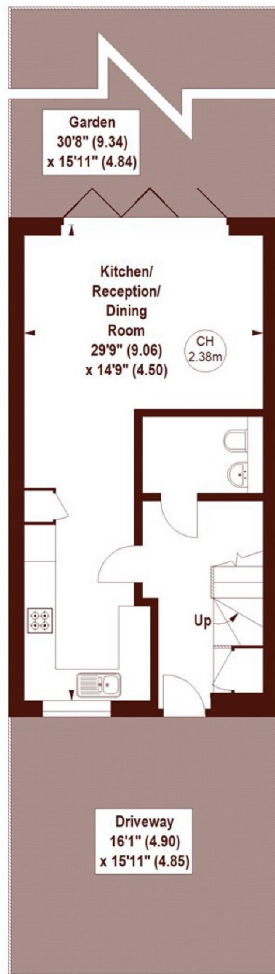


Eveline Road is a quiet residential road ideally located parallel to the wide open spaces of Figges Marsh. The local amenities on London Road are only a short walk away, with easy reach of Tooting overground station as well as Tooting Broadway and Colliers Wood underground. Both offer frequent access into and out of the City.

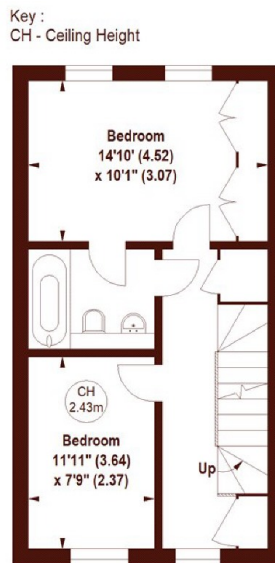


## Faren Terrace, Eveline Road, Mitcham, CR4

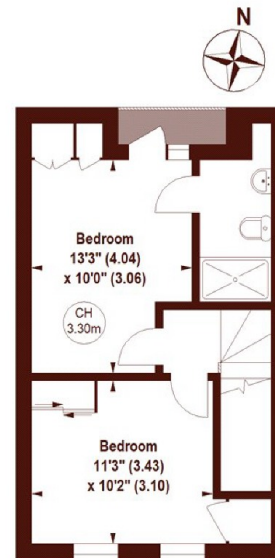
APPROX. GROSS INTERNAL FLOOR AREA 1247 SQFT / 115.85 SQM



GROUND FLOOR



FIRST FLOOR



SECOND FLOOR

Not to scale, for guidance only and must not be relied upon as a statement of fact.  
All measurements and areas are approximate only

**Marsh & Parsons Tooting**  
29-31 Upper Tooting Road,  
London, SW17 7TS  
020 8767 3655

We aim to make our particulars both accurate and reliable. However, they are not guaranteed; nor do they form part of an offer or contract. If you require clarification on any points then please contact us, especially if you're traveling some distance to view. Please note that appliances and heating systems have not been tested and therefore no warranties can be given as to their good working order.