



Eardley Road, SW16

£400,000



- Two Bedrooms
- First Floor Flat

- Spacious Private Garden
- Outhouse

- Off Street Parking
- 553 Sq. Ft.





ABOUT THE PROPERTY

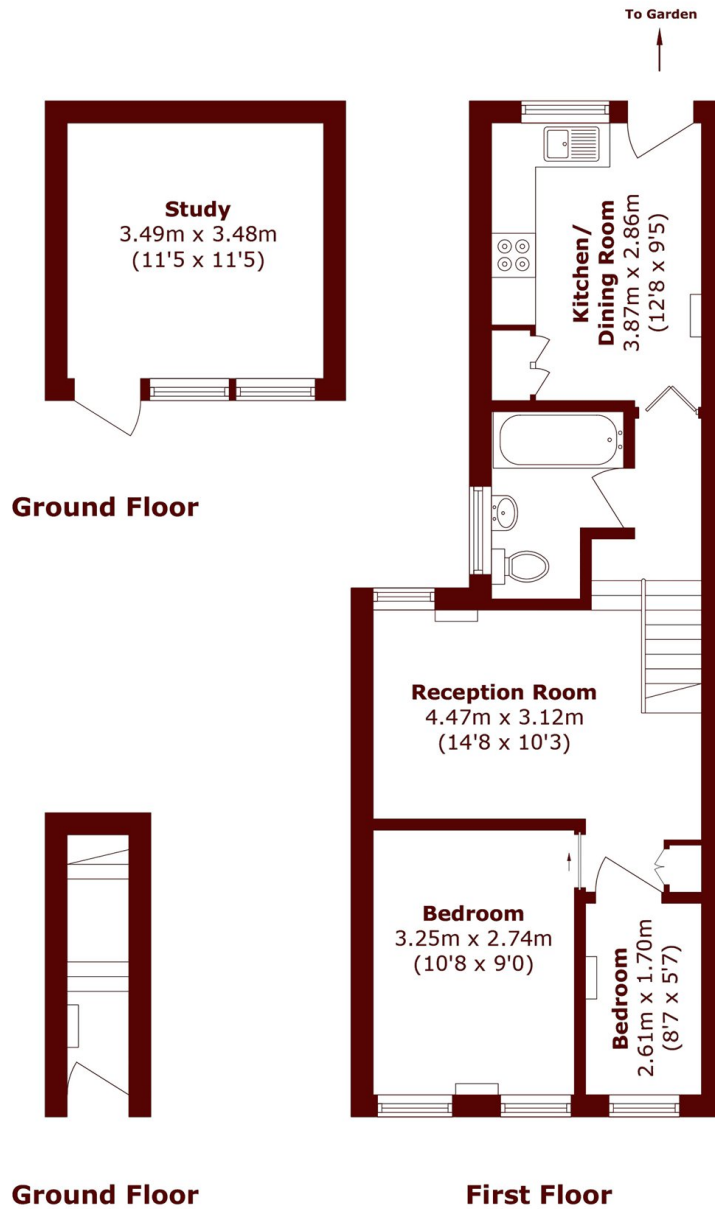
A two bedroom, first floor flat with a spacious private garden and off-street parking.

Perfect for first time buyers, this flat comes to the market offering two bedrooms, an eat-in kitchen, bright reception room and a spacious private garden. Both bedrooms are located towards the front of the property, followed by the reception room which has a bright interior and a rounded cased opening leading towards the fully fitted kitchen. The kitchen offers enough space for a dining table while still offering plenty of storage space. It leads out to the low maintenance garden which has been landscaped with a raised border planting area and a gravelled seating space ideal for outdoor entertaining. An outdoor room can be found at the end of the garden offering an excellent space for remote working, hobbies or storage. Extra storage space can be found in the loft as well as throughout the flat.



Eardley Road is located within 0.4 miles of Streatham Common station which offers fast and regular train services into London Bridge and London Victoria. There are also local amenities only a short walk away as well as local bus routes nearby, which offers regular services to Brixton and Tooting Broadway.





Total area (approx.): 51.4 sq. m (553.3 sq. ft)
Study area (approx.): 12.1 sq. m (130.2 sq. ft)

Marsh & Parsons Tooting
29-31 Upper Tooting Road,
London, SW17 7TS
020 8767 3655

We aim to make our particulars both accurate and reliable. However, they are not guaranteed; nor do they form part of an offer or contract. If you require clarification on any points then please contact us, especially if you're traveling some distance to view. Please note that appliances and heating systems have not been tested and therefore no warranties can be given as to their good working order.