



Springfield Drive, SW17

£550,000



- Two Double Bedrooms
- First Floor Flat

- 762 Sq. Ft.
- Close to Transport Links

- Modern Interior
- Private Balcony



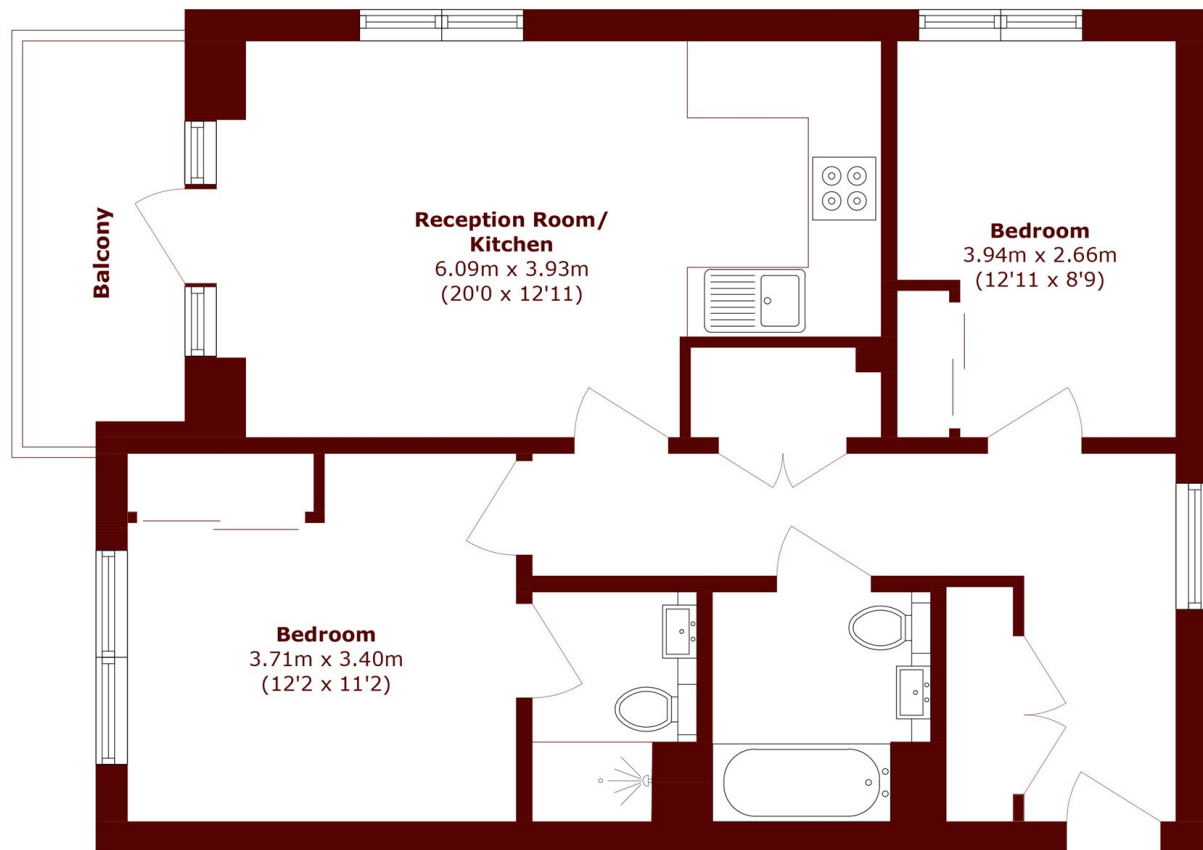


ABOUT THE PROPERTY

Coming to the market in pristine condition, this flat is in an ideal location and offers a modern interior. It is on the first floor of an apartment building in Tooting and has a spacious interior of 762 sq. Ft. The kitchen/ reception area is open plan with the fully fitted kitchen neatly positioned in the corner offering partial separation while maintaining open plan living. A floor to ceiling glass door provides direct access to the private balcony. There are two large double bedrooms, one of which has an en suite bathroom and there is a further family style bathroom complete with a shower over the bath.



Springfield Drive is a stone's throw away from the amenities of Upper Tooting Road and Balham High Road, and the green open spaces of both Tooting Bec and Wandsworth Commons. Transport links are excellent with the Northern Line at Tooting Bec just a short walk away and overground trains running into Victoria via Clapham Junction from Balham Station. There are also frequent buses servicing local areas.



Total area (approx.): 71.0 sq. m (764.2 sq. ft)
Balcony area (approx.): 5.9 sq. m (63.5 sq. ft)

Marsh & Parsons Tooting
29-31 Upper Tooting Road,
London, SW17 7TS
020 8767 3655

We aim to make our particulars both accurate and reliable. However, they are not guaranteed; nor do they form part of an offer or contract. If you require clarification on any points then please contact us, especially if you're traveling some distance to view. Please note that appliances and heating systems have not been tested and therefore no warranties can be given as to their good working order.

marshandparsons.co.uk