



Graveney Road, SW17

£875,000

3 2 1 C

- Three Double Bedrooms
- Landscaped Private Garden
- Open Plan Kitchen/Dining
- Three Floors
- Close to Transport Links
- 939 Sq. Ft.





ABOUT THE PROPERTY

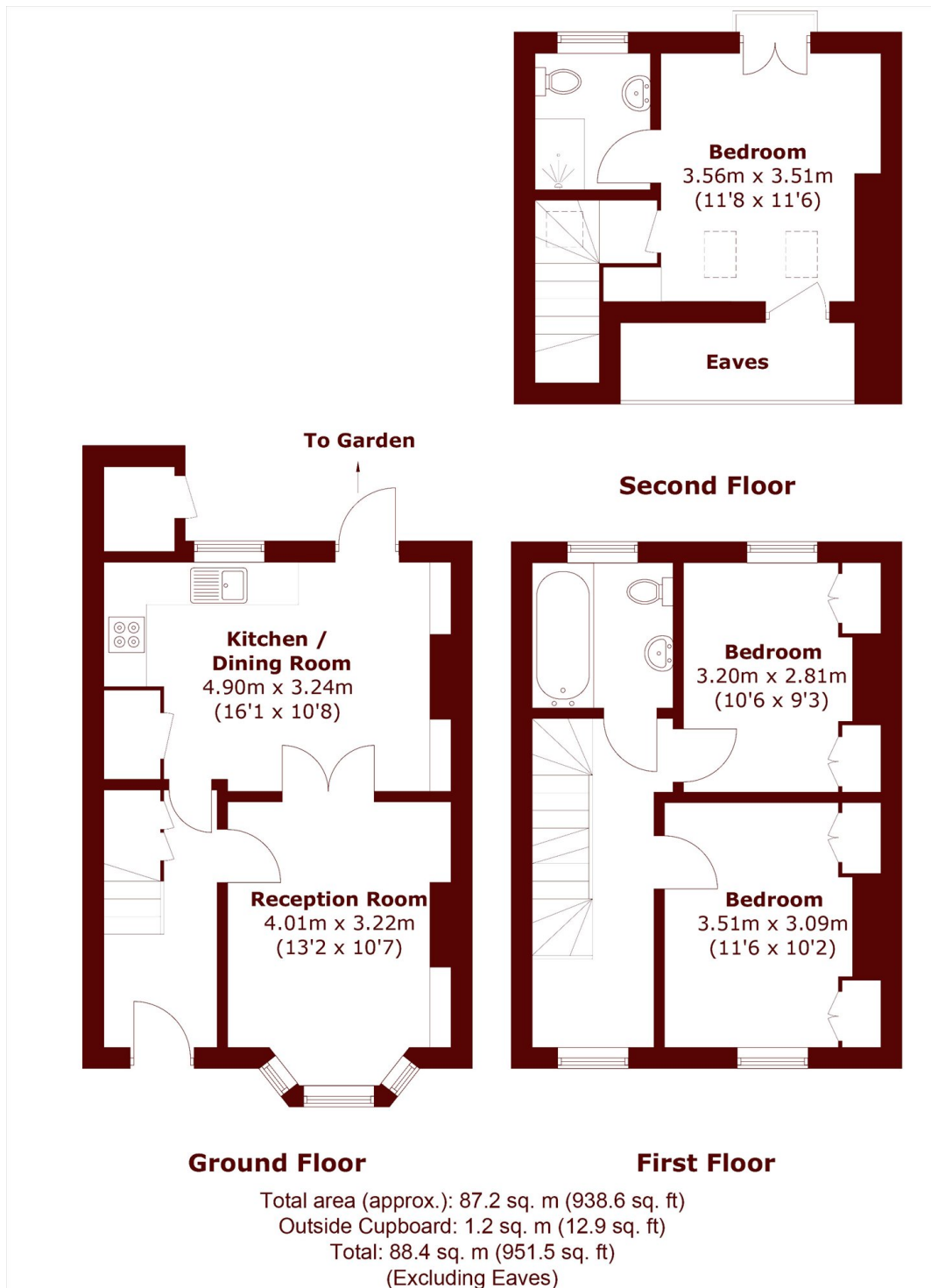
A beautifully presented three bedroom property set in a gorgeous Victorian brick building, with a private south facing garden.

Benefitting from period features such as high ceilings, bay windows and a feature fireplace, this property comes to the market in pristine condition. The ground floor reception room has plenty of natural light due to the large bay window. It also offers built-in shelving and stunning wooden flooring. Double doors lead towards the open plan kitchen/dining area with a fully fitted kitchen and direct access to the neatly landscaped south facing garden. Raised stonework provides additional seating room creating the perfect outdoor dining/entertaining space. Two almost equal size double bedrooms are on the first floor alongside the family bathroom and the master bedroom can be found on the first floor which has skylight windows, a Juliet balcony and an en suite bathroom.



Graveney Road is a quiet, residential road. Local amenities of Tooting Broadway are in abundance as well as the bars and restaurants of the vibrant Tooting Market. Local bus routes and Tooting Broadway (Northern line, zone 3) can be found a short walk away.





Marsh & Parsons Tooting
29-31 Upper Tooting Road,
London, SW17 7TS
020 8767 3655

We aim to make our particulars both accurate and reliable. However, they are not guaranteed; nor do they form part of an offer or contract. If you require clarification on any points then please contact us, especially if you're traveling some distance to view. Please note that appliances and heating systems have not been tested and therefore no warranties can be given as to their good working order.