

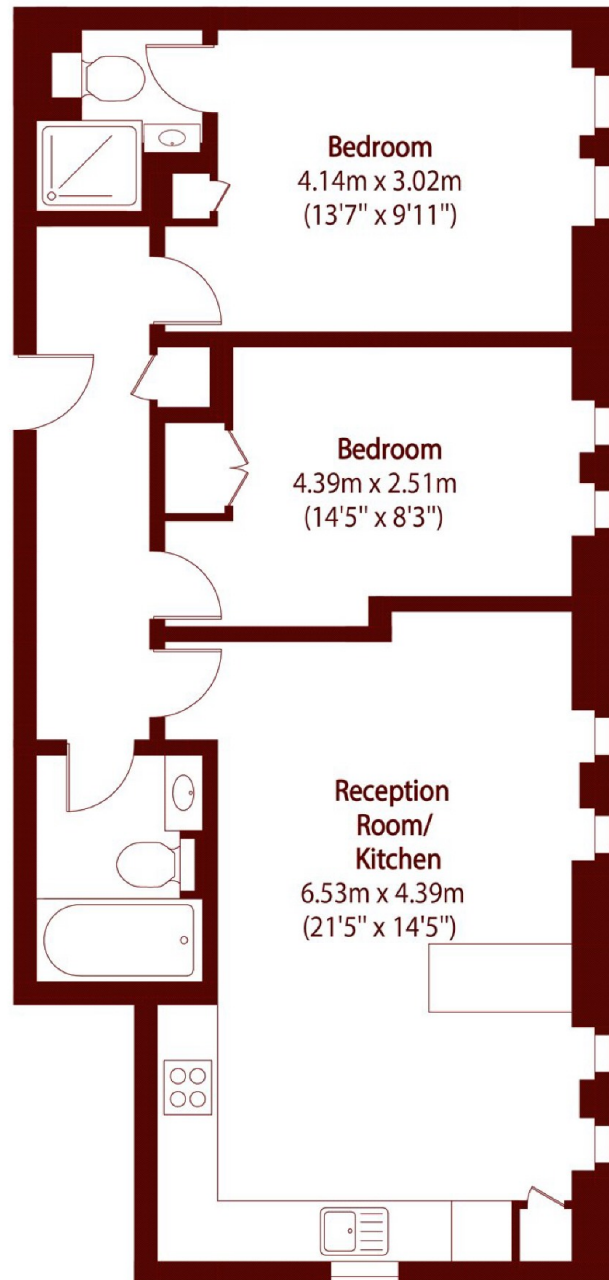


Huddlestone Road, NW2

£475,000



- Two bedrooms, two bathrooms
- Beautiful church conversion
- Superb finish throughout
- Charming period features
- Almost 700sqft
- Bespoke development



Total area (approx): 64.84 sq m (698 sq. ft)

Marsh & Parsons Willesden Green

291-293 Willesden Lane,
London, NW2 5HY
020 8451 0420