

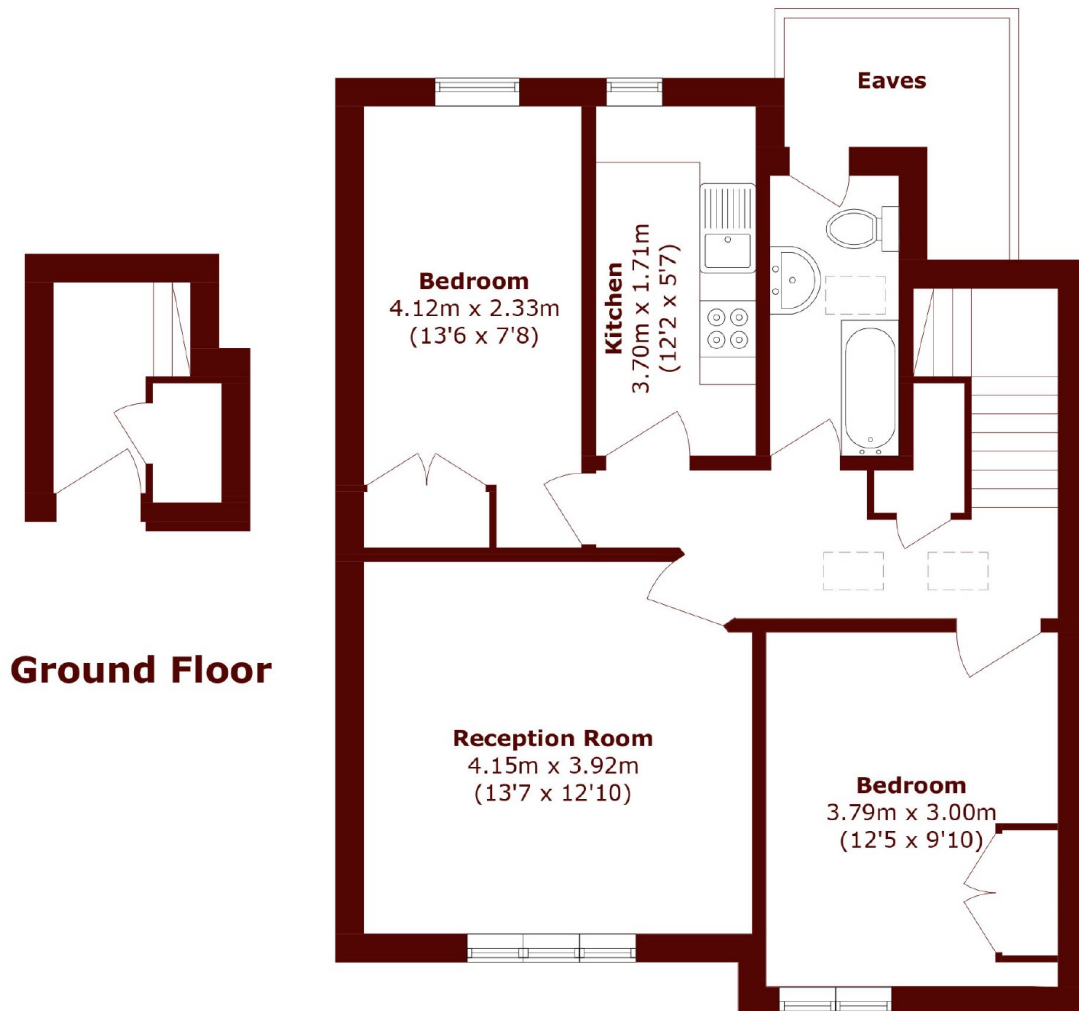


Blenheim Gardens, NW2

£450,000

2 1 1 C

- Two-bedroom apartment
- Top floor
- Share of Freehold
- Sought after road
- Victorian style
- Lots of natural light



First Floor

Total area (approx.): 66.7 sq. m (717.9 sq. ft)
(Excluding Eaves)

Marsh & Parsons Willesden Green

291-293 Willesden Lane,
London, NW2 5HY
020 8451 0420