



Willesden Lane, NW6

£570,000



- Share Of Freehold
- Private Entrance
- West Facing Garden
- Great Condition
- Two Bedrooms
- Characterful Wooden Flooring





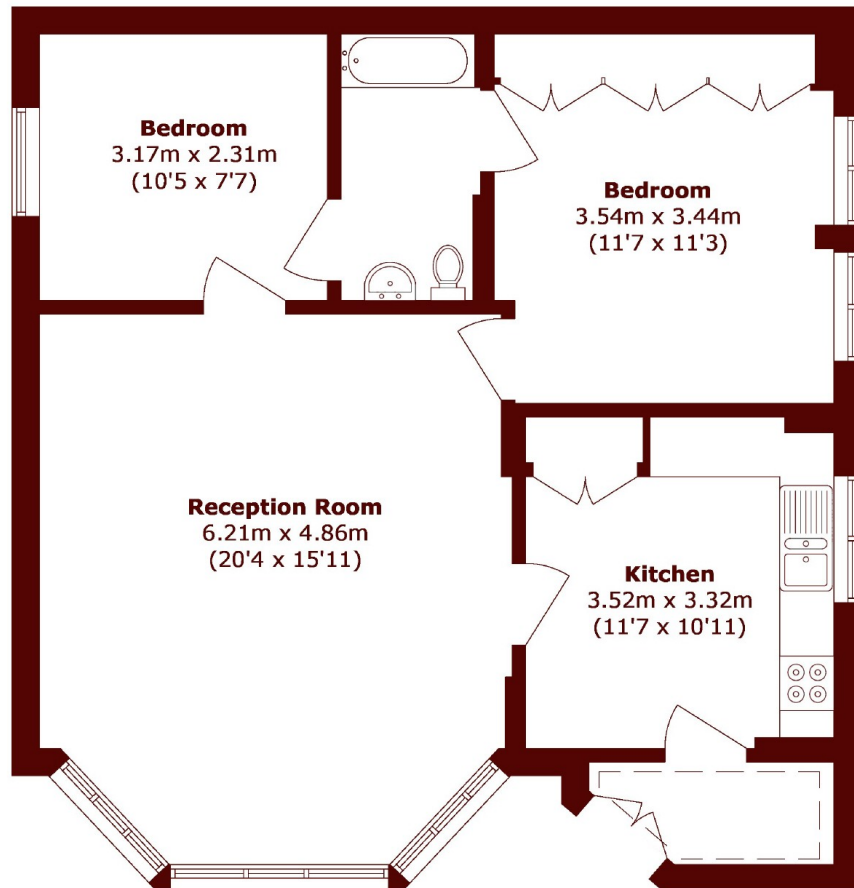
ABOUT THE PROPERTY

This bright and spacious, two bedroom garden flat arranged over 823 square feet is situated on a quiet residential street in Brondesbury Park close to Queen's Park. Comprising a modern kitchen, sleek three-piece family bathroom and a separate reception room with bay window and ample dining space.

The property further benefits from, built in cupboard space, private patio and large garden as well as first come first serve off-street parking.

Coverdale Road is located just a short walk away from the bustling shops and cafes of the Salusbury Road and the green open spaces of Queen's Park. Local transport links include Kilburn tube (Jubilee line) Brondesbury Park Overground (Mildmay line) and Queen's Park tube (Bakerloo line).





Total area (approx.): 76.5 sq. m (823.4 sq. ft)

Marsh & Parsons Willesden Green

291-293 Willesden Lane,
London, NW2 5HY
020 8451 0420