

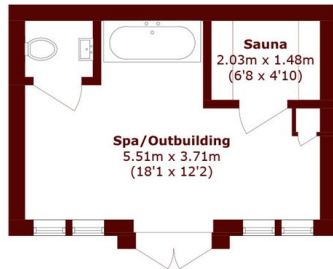


Donnington Road, NW10

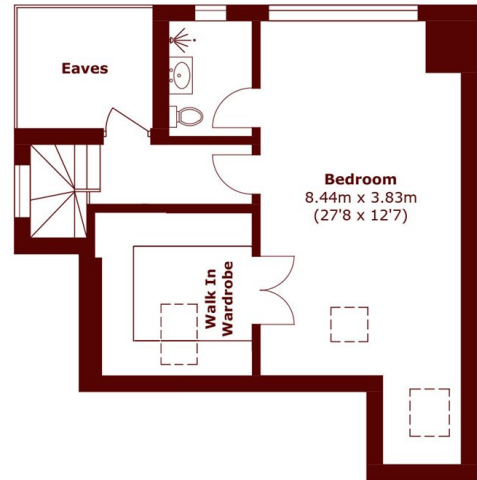
£2,350,000



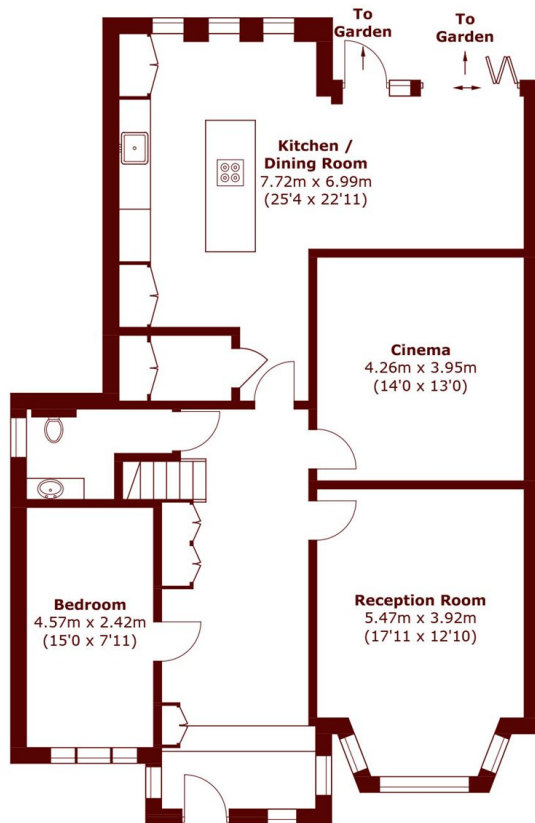
- Four bedrooms
- Brand new refurbishment
- Off-street parking
- Cinema room
- Landscaped garden
- Outhouse with sauna



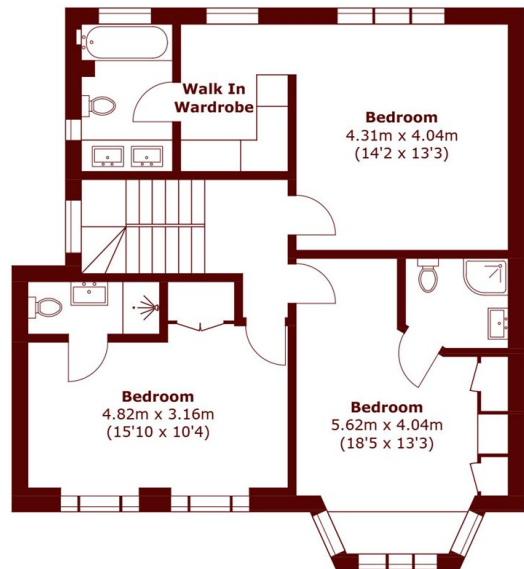
Ground Floor



Second Floor



Ground Floor



First Floor

Total area (approx.) :240 sq. m (2,593.0 sq. ft)
 Outbuilding area (approx.): 20.7 sq. m (222.8 sq. ft)
 (Excluding Eaves)

Marsh & Parsons Willesden Green

291-293 Willesden Lane,
 London, NW2 5HY
 020 8451 0420