

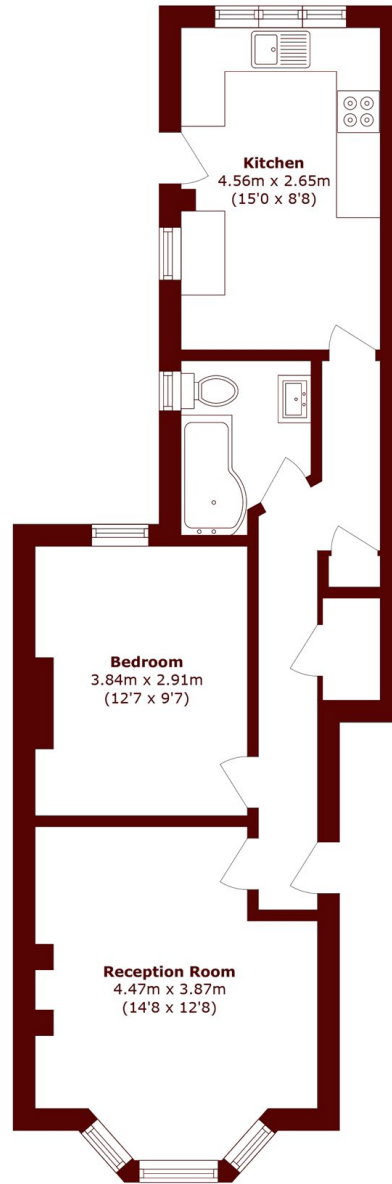


Buckingham Road, NW10

£425,000

🛏 1 🛁 1 🛋 1 📺 C

- Spacious garden flat
- Arranged over 561sqft
- Separate kitchen
- Modern finish
- Lovely private garden
- Share of Freehold



Total area (approx.): 52.2 sq. m (561.8 sq. ft)

Marsh & Parsons Willesden Green

291-293 Willesden Lane,
London, NW2 5HY
020 8451 0420