



## Windsor Road, NW2

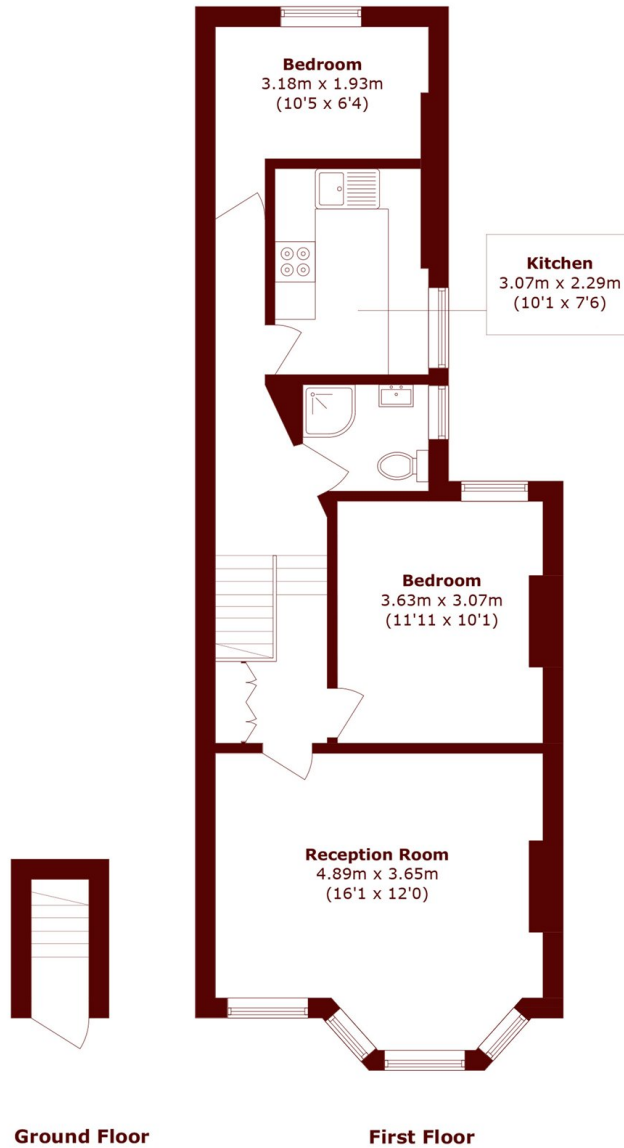
£2,200 pcm



- Two-bedroom
- Period Conversion

- Large Reception
- Newly Refurbished

- Modern Kitchen
- Close to Transport



Total area (approx.): 61.9 sq. m (666.2 sq. ft)

## Marsh & Parsons Queens Park

56 Salusbury Road, London,  
NW6 6NN  
020 7624 4513