



Staverton Road, NW2

£1,699 per week



- One Bedroom
- Ground Floor Flat
- High Ceilings





ABOUT THE PROPERTY

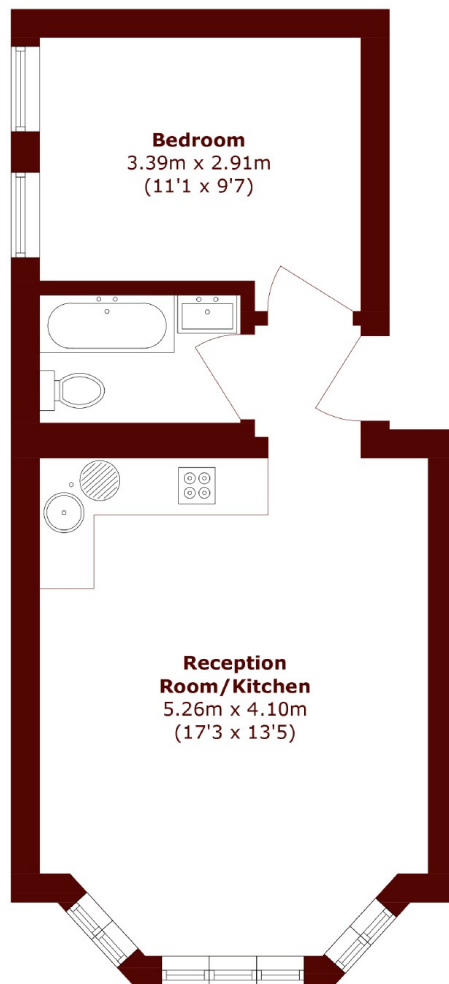
A ground floor flat with high ceilings and wooden floors throughout. This well-presented home offers bright living space in a quiet residential street.

Set within a period conversion, this ground floor flat features a spacious open-plan living area with high ceilings and wooden floors throughout. The layout includes a well-equipped kitchen, a double bedroom and a modern bathroom.

The property has a bright and airy feel, with large windows and well-proportioned rooms. Positioned in a peaceful residential road, it's ideal for tenants looking for a stylish and comfortable home.

With Queen's Park, Willesden Green and local parks nearby, as well as excellent transport links, this flat is well located for access to central London and local amenities.

Staverton Road is a tree-lined street close to Queen's Park and Willesden Green, with local shops, cafés and transport links all within easy reach.



Total area (approx.): 35.3 sq. m (379.9 sq. ft)

Marsh & Parsons Willesden Green

291-293 Willesden Lane,
London, NW2 5HY
020 8451 0420