

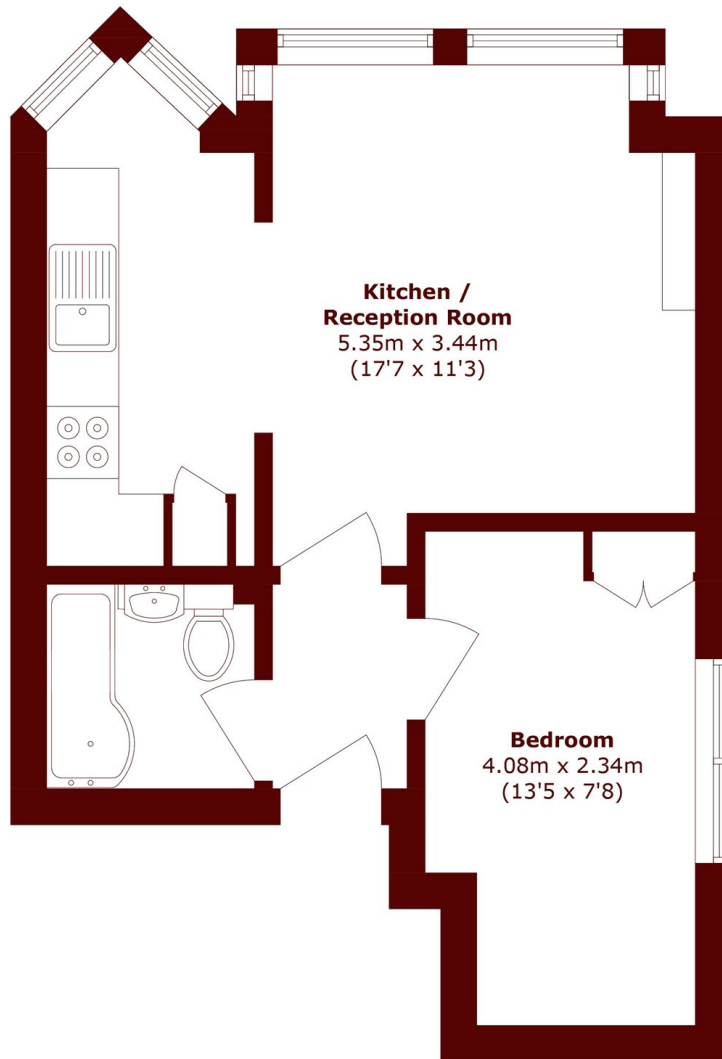


## Melrose Avenue, NW2

£325,000



- One Bedroom Apartment
- First Floor
- Share of Freehold
- Natural Light
- Sought After Location
- Great Transport Links



Total area (approx.): 35.2 sq. m (378.8 sq. ft)

## Marsh & Parsons Willesden Green

291-293 Willesden Lane,  
London, NW2 5HY  
020 8451 0420