



Coverdale Road, NW2

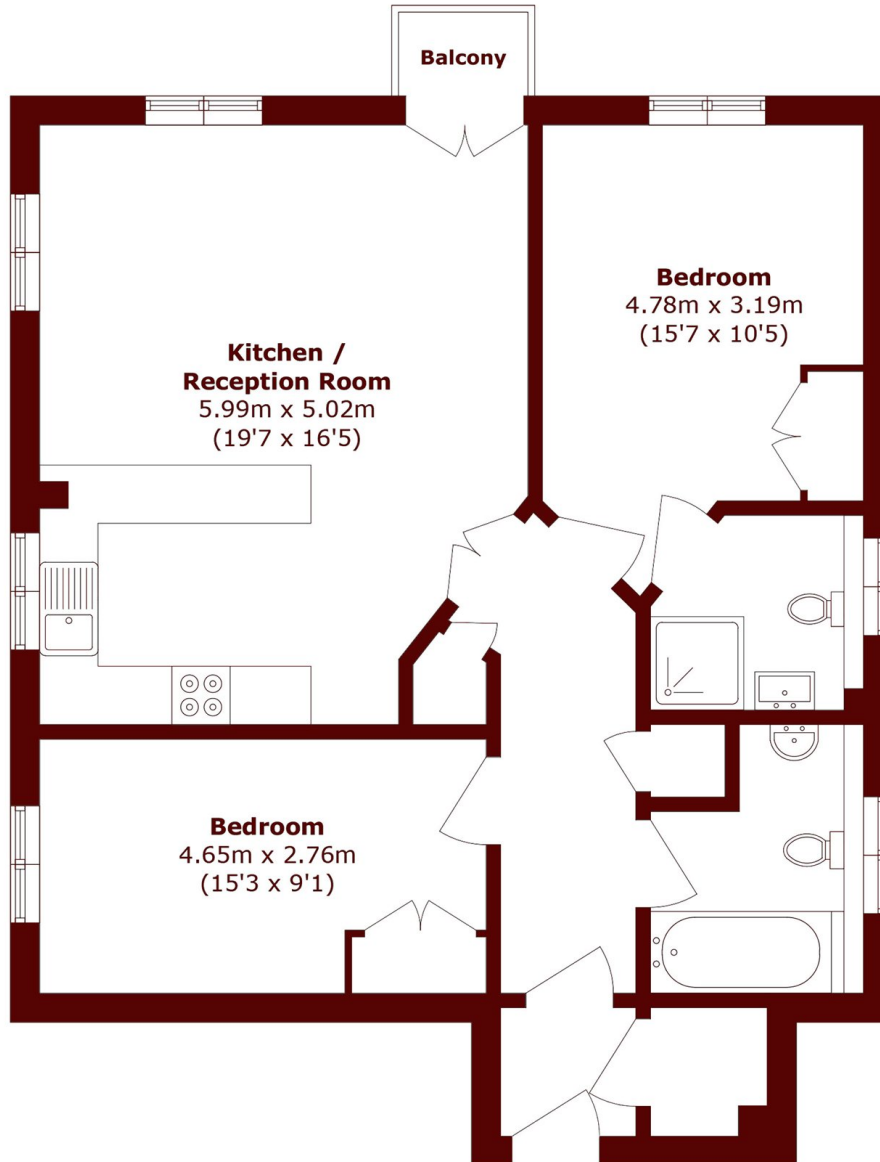
£500,000



- Balcony
- Off Street Parking

- Large Double Bedrooms
- Secluded Location

- Natural Light
- Modern



Total area (approx.): 79.6 sq. m (856.8 sq. ft)

Balcony area (approx.): 1.1 sq. m (11.8 sq. ft)

Marsh & Parsons Willesden Green

291-293 Willesden Lane,
London, NW2 5HY
020 8451 0420