



Somerset Road, SW19

£750,000

 3  2  1  D

- Oakfield's Estate
- Three Bedroom

- Sunroom
- Private Garage

- Residential Parking
- Share of Freehold





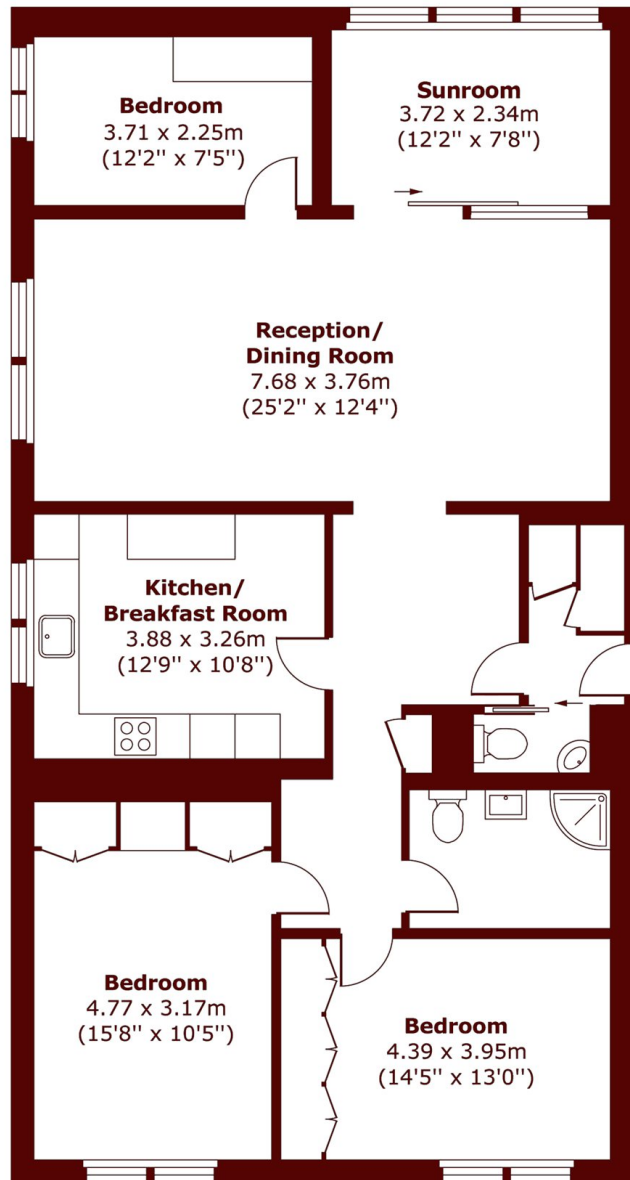
ABOUT THE PROPERTY

Situated within the award-winning development of Oakfields Estate, Wimbledon Village is this three-bedroom top floor purpose built apartment. The property offers lateral accommodation circa 1230 sq ft with a double reception/dining area, a large shower room, separate guest wc, ample storage and an enclosed balcony/Sunroom. The development further benefits visitors parking, concierge service and well manicured communal grounds.



Spencer House is in a highly sought-after development and located within a short distance to the Wimbledon All England Tennis Club, Wimbledon Village and the open spaces of the Common.





Total area (approx.) 115.69 sq. m (1,245 sq. ft)

Marsh & Parsons Wimbledon

24 High Street, Wimbledon
Village, SW19 5DX
020 8879 6660