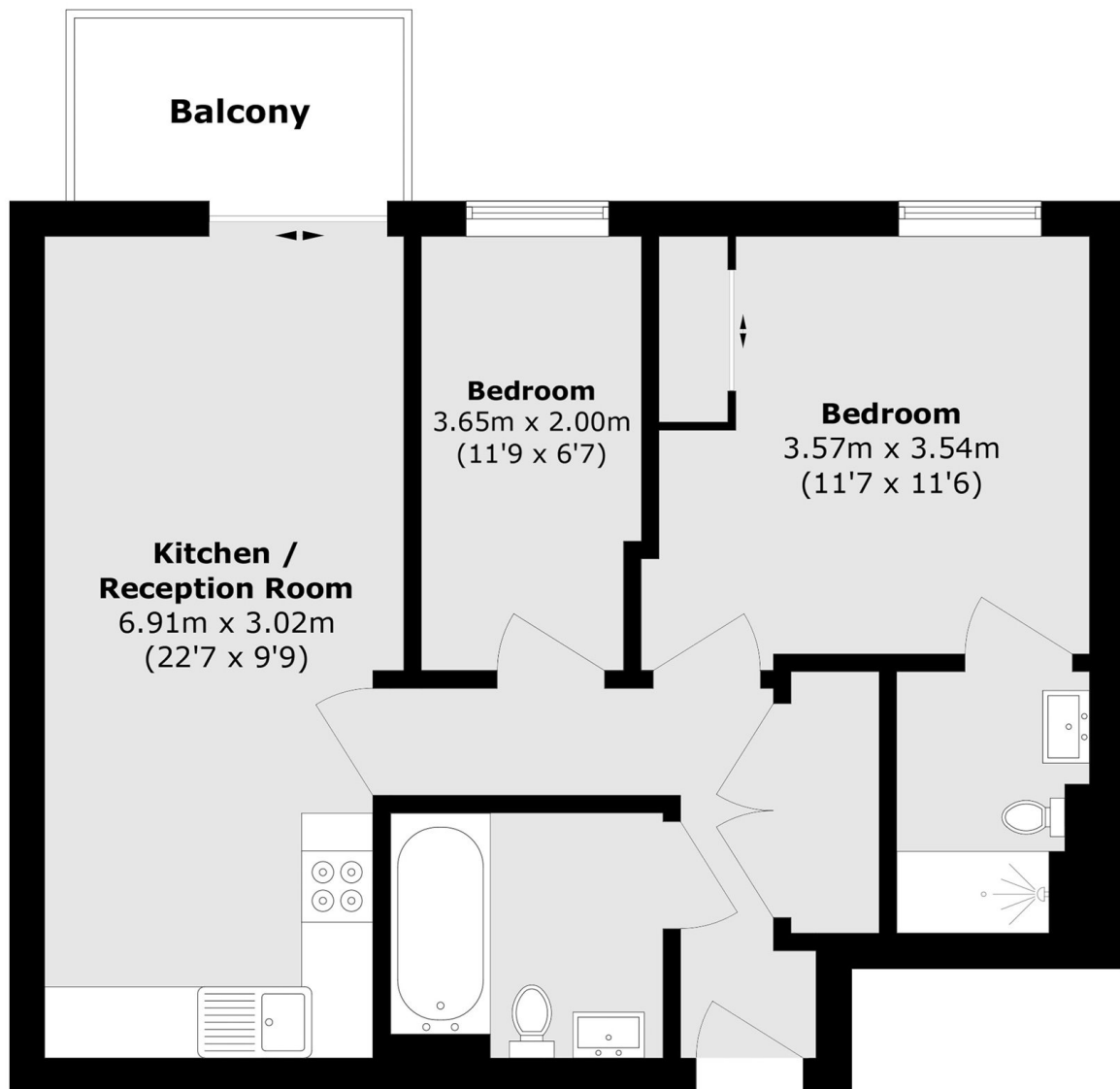


BARGE WALK, SE10

£375,000

A two bedroom, two bathroom property located on the twelfth floor of the sought after City Peninsula development. This apartment offers an open plan kitchen/living space with a private balcony and views of the river, two good sized bedrooms, one of which is en suite, and a family bathroom.

- Two Bedrooms
- Private Balcony
- 24hr Concierge
- Lease Length 228 Years
- Ground Rent £300
- Service Charge £5,382



Total area (approx.): 58.3 sq. m (627.5 sq. ft)

Balcony area (approx.): 4.3 sq. m (46.3 sq. ft)

LiFE RESIDENTIAL

36 Millharbour, London, E14

9JS

Sales: 020 3668 1033

Lettings: 020 3668 1030

Energy Rating: B. We aim to make our particulars both accurate and reliable. However they are not guaranteed; nor do they form part of an offer or contract. If you require clarification on any points then please contact us, especially if you're traveling some distance to view. Please note that appliances and heating systems have not been tested and therefore no warranties can be given as to their good working order.