

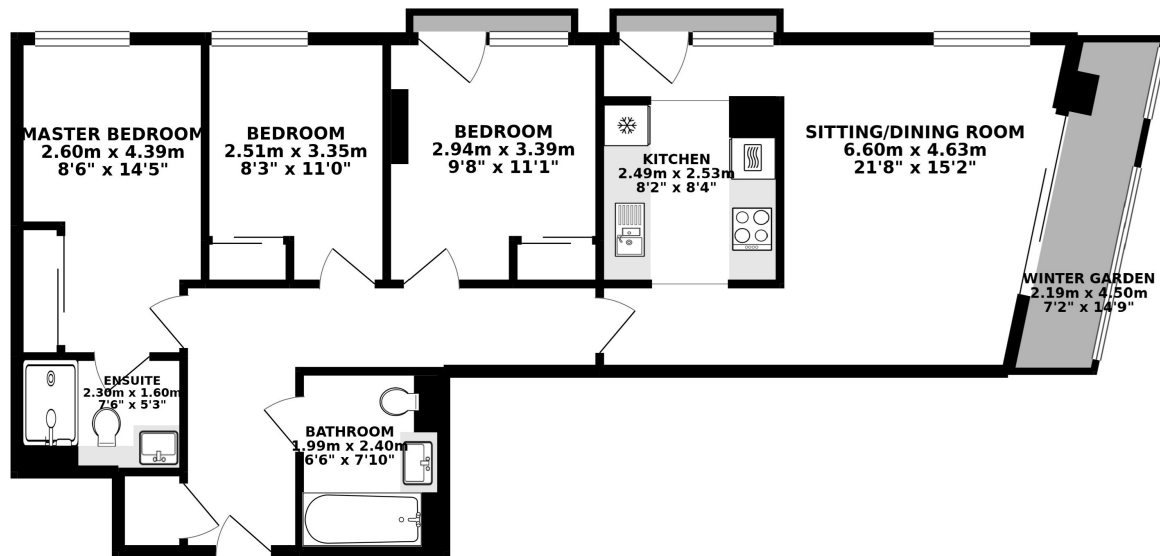


## LINCOLN PLAZA, E14

**£735,000**

A three bedroom, two bathroom apartment in the popular Talisman Tower, Lincoln Plaza. This property offers a large, bright living area with a semi contained kitchen, a winter garden for views of Canary Wharf, three bedrooms, one of which is en suite, and a family bathroom.

- Two Double Bedrooms
- Cinema Room
- Library
- Games Room
- Gym
- 24 Hour Concierge



TOTAL FLOOR AREA: 82 sq. mtr. (882 sq. ft. approx.)

Whilst every attempt has been made to ensure the accuracy of the floorplan contained here, measurements of doors, windows, rooms and any other items are approximate and no responsibility is taken for any error, omission or mis-statement. This plan is for illustrative purposes only and should be used as such by any prospective purchaser. The services, systems and appliances shown have not been tested and no guarantee as to their operability or efficiency can be given.  
Made with Metropix ©2019



**LiFE RESIDENTIAL**

36 Millharbour, London, E14

9JS

Sales: 020 3668 1033

Lettings: 020 3668 1030

Energy Rating: B. We aim to make our particulars both accurate and reliable. However they are not guaranteed; nor do they form part of an offer or contract. If you require clarification on any points then please contact us, especially if you're traveling some distance to view. Please note that appliances and heating systems have not been tested and therefore no warranties can be given as to their good working order.