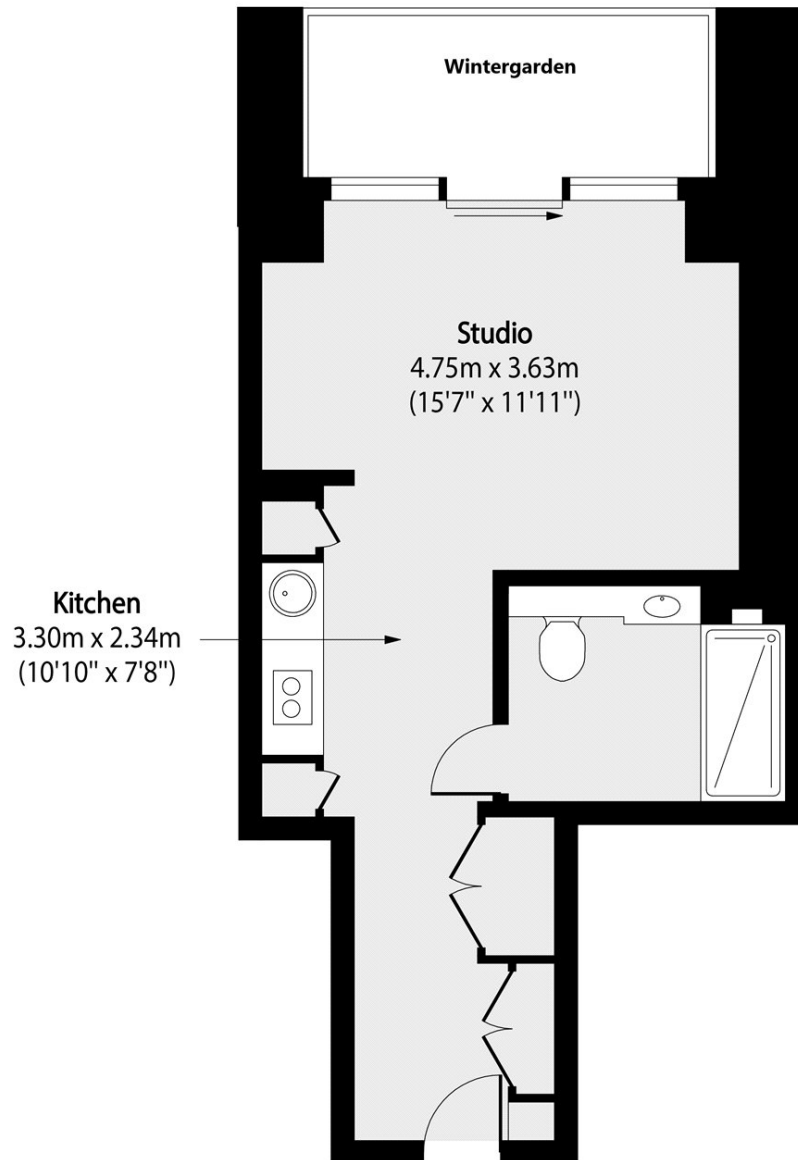


DOLLAR BAY PLACE, E14

£325,000

A stylish studio flat on the thirteenth floor of the sought-after Dollar Bay development offering views of Canary Wharf and the River Thames. The development itself provides a residents gym, a private residents garden and 24 hour concierge.

- Studio Apartment
- Modern Design
- Great Location
- Gym
- Private Garden
- 24hr Concierge



Total area (approx): 35.02 sq m (377 sq. ft)

Balcony area (approx): 6.32 sq m (68 sq. ft)

LiFE RESIDENTIAL

36 Millharbour, London, E14

9JS

Sales: 020 3668 1033

Lettings: 020 3668 1030

Energy Rating: B. We aim to make our particulars both accurate and reliable. However they are not guaranteed; nor do they form part of an offer or contract. If you require clarification on any points then please contact us, especially if you're traveling some distance to view. Please note that appliances and heating systems have not been tested and therefore no warranties can be given as to their good working order.