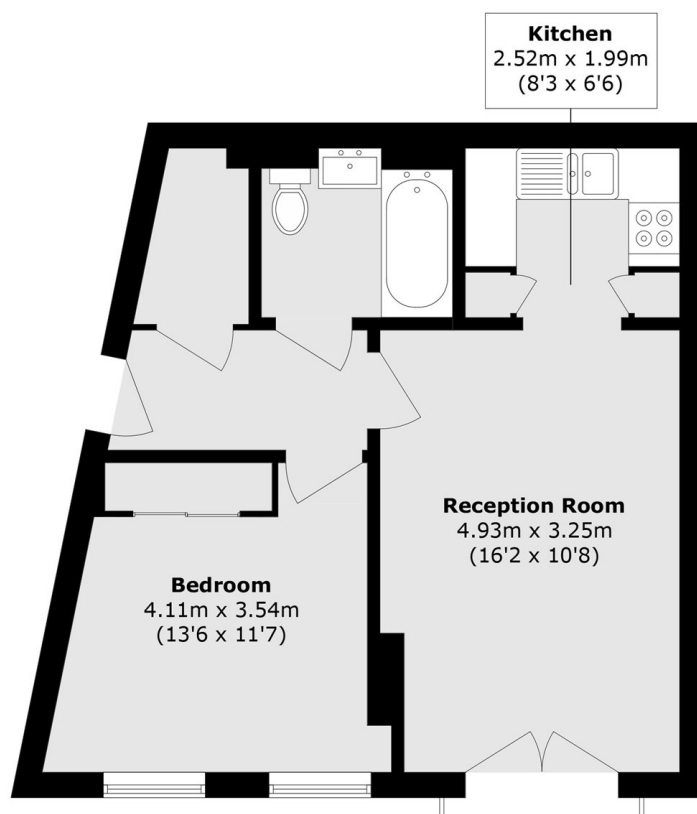


LINCOLN PLAZA, E14

£375,000

A one bedroom apartment situated on the twenty-second floor of the sought after Lincoln Plaza building. This property consists of a semi open plan kitchen/reception with access to a private balcony overlooking Canary Wharf, a double bedroom and a modern family bathroom.

- One Double Bedroom
- Cinema Room
- Swimming Pool
- Roof Terrace
- Residents Gym
- Lounge



Total area (approx.): 49.5 sq. m (532.8 sq. ft)

LiFE RESIDENTIAL

36 Millharbour, London, E14

9JS

Sales: 020 3668 1033

Lettings: 020 3668 1030

Energy Rating: B. We aim to make our particulars both accurate and reliable. However they are not guaranteed; nor do they form part of an offer or contract. If you require clarification on any points then please contact us, especially if you're traveling some distance to view. Please note that appliances and heating systems have not been tested and therefore no warranties can be given as to their good working order.