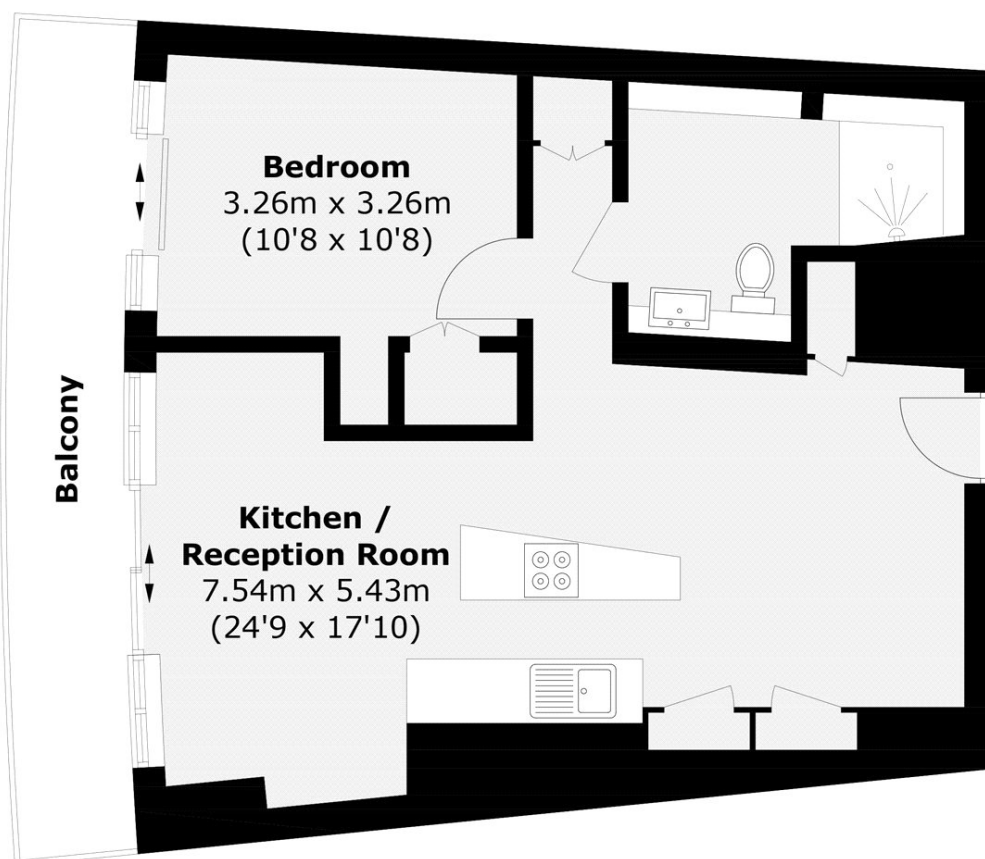


CROSSHARBOUR PLAZA, E14

£500,000

This one bedroom apartment on the thirty-second floor of the popular Arena Tower features a modern, open plan reception/kitchen with SMEG appliances and a south facing, private balcony, a double bedroom, also with balcony access, and a family bathroom.

- One Double Bedroom
- South Facing Balcony
- 24 Hour Concierge
- Gym
- Swimming Pool
- Underfloor Heating



Total area (approx.): 47.8 sq. m (514.5 sq. ft)
Balcony area (approx.): 8.5 sq. m (91.5 sq. ft)

LiFE RESIDENTIAL

36 Millharbour, London, E14

9JS

Sales: 020 3668 1033

Lettings: 020 3668 1030

Energy Rating: B. We aim to make our particulars both accurate and reliable. However they are not guaranteed; nor do they form part of an offer or contract. If you require clarification on any points then please contact us, especially if you're traveling some distance to view. Please note that appliances and heating systems have not been tested and therefore no warranties can be given as to their good working order.