

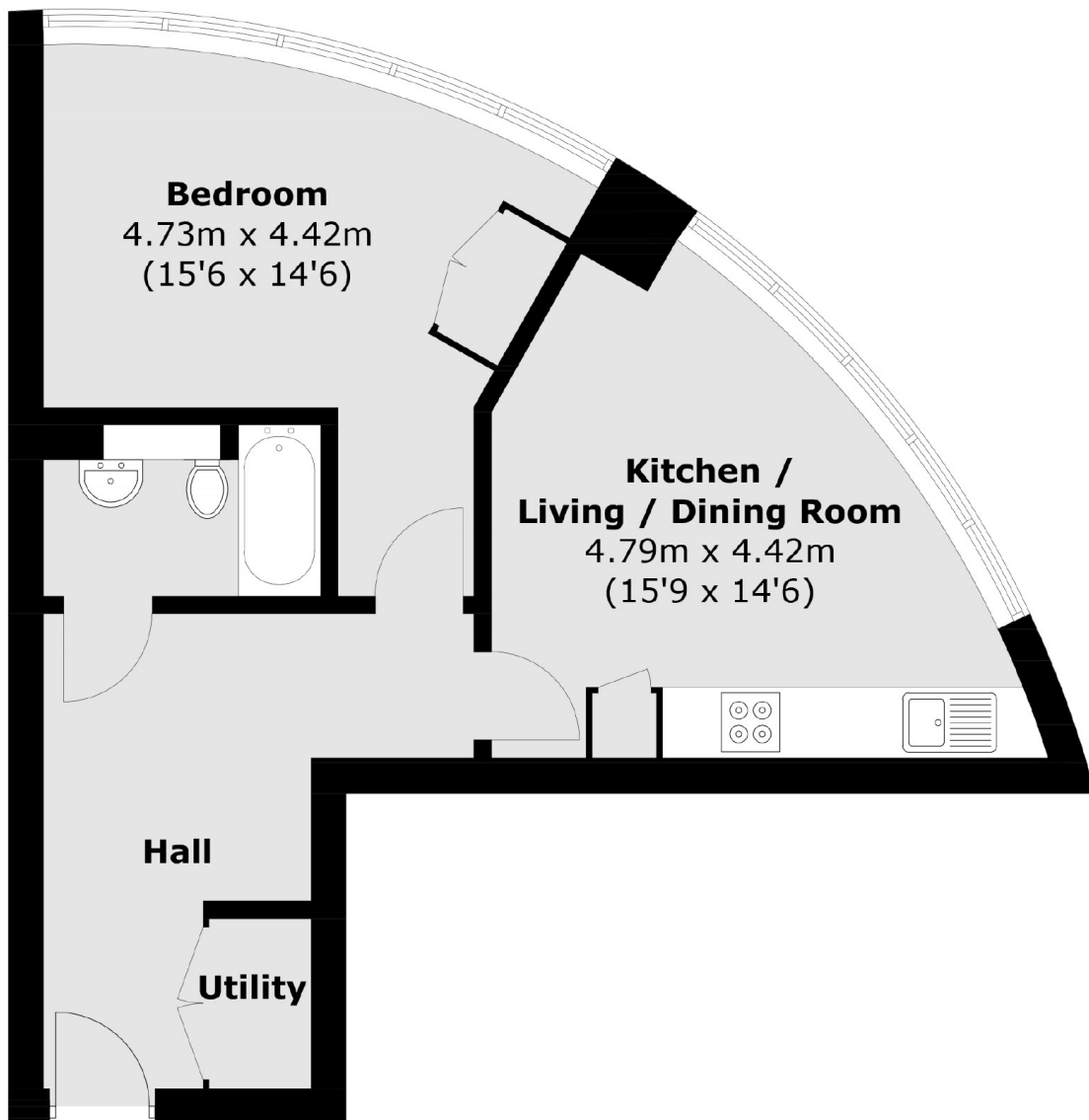


QUADRANT WALK, E14

£375,000

A modern one bedroom apartment located on the eleventh floor of Trinity Tower. This property offers an open plan kitchen/ reception with floor-to-ceiling windows for views of Canary Wharf, a double bedroom, featuring the same style of windows, a family bathroom and built in storage throughout.

- One Double Bedroom
- Gym
- Concierge
- Built In Storage
- Full Wall Window
- Modern Design



First Floor

Total area (approx.): 45.3 sq. m (487.6 sq. ft)

LiFE RESIDENTIAL

36 Millharbour, London, E14

9JS

Sales: 020 3668 1033

Lettings: 020 3668 1030

Energy Rating: B. We aim to make our particulars both accurate and reliable. However they are not guaranteed; nor do they form part of an offer or contract. If you require clarification on any points then please contact us, especially if you're traveling some distance to view. Please note that appliances and heating systems have not been tested and therefore no warranties can be given as to their good working order.