

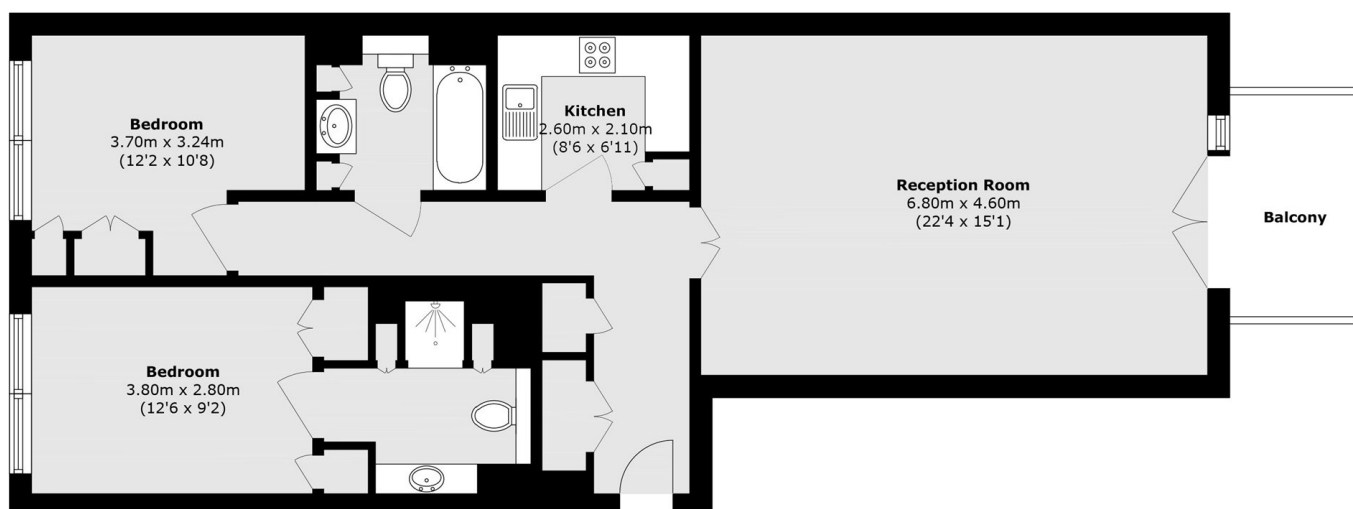


FAIRMONT AVENUE, E14

£599,000

A two bedroom apartment in New Providence Wharf with far reaching city views. This property provides a spacious reception area with sliding doors to the private balcony, a separate kitchen with built in appliances, two double bedrooms, one of which is en suite, and a family bathroom.

- Two Double Bedrooms
- Two Bathrooms
- Private Balcony
- River Facing
- Private Parking
- Gym Facilities



Total area (approx.): 87.3 sq. m (939.6 sq. ft)

Balcony area (approx.): 5.1 sq. m (54.8 sq. ft)

LiFE RESIDENTIAL

36 Millharbour, London, E14

9JS

Sales: 020 3668 1033

Lettings: 020 3668 1030

Energy Rating: B. We aim to make our particulars both accurate and reliable. However they are not guaranteed; nor do they form part of an offer or contract. If you require clarification on any points then please contact us, especially if you're traveling some distance to view. Please note that appliances and heating systems have not been tested and therefore no warranties can be given as to their good working order.