

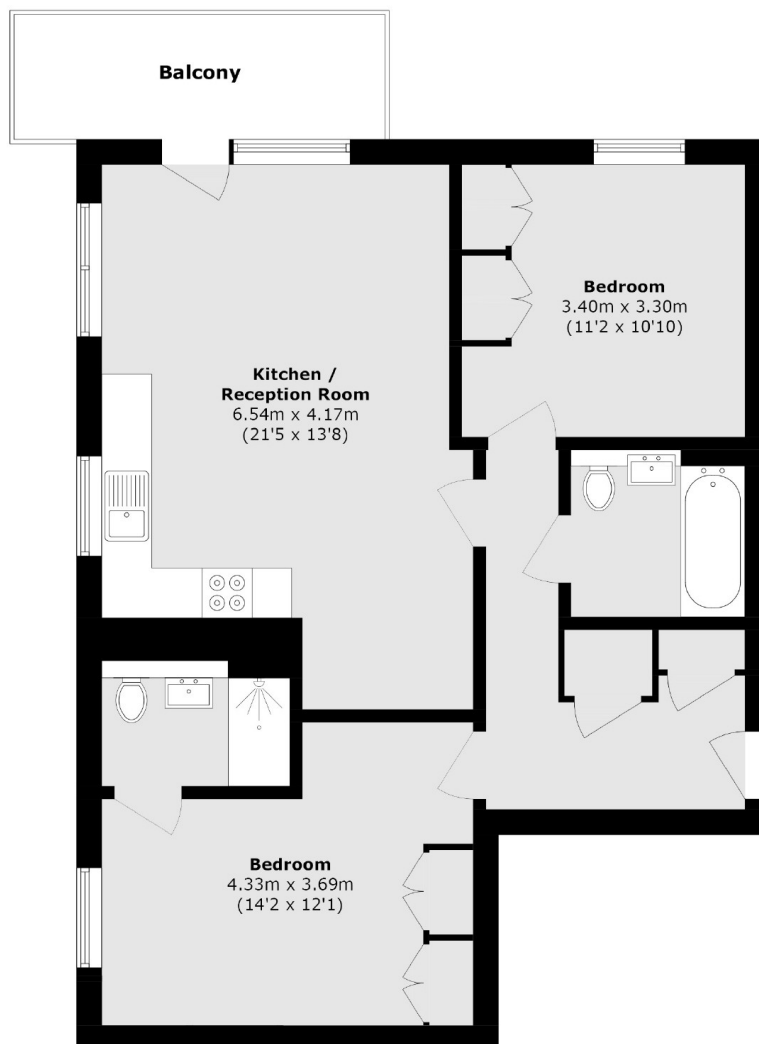


## NELSON STREET, E16

**£500,000**

A modern and bright, two bedroom apartment in an ideal location being minutes away to the Crossrail and Underground stations. Comprised of a contemporary, open plan kitchen/reception with dual aspect views, and access to a private balcony, this property offers plenty of natural light. Both double bedrooms are a good size and offer built in storage and the

- Two Double Bedrooms
- Two Bathrooms
- Private Balcony
- Dual Aspect Views
- Lease Length 237 Years
- Service Charge £4,774



Total area (approx.): 71.3 sq. m (767.5 sq. ft)

Balcony area (approx.): 6.7 sq. m (72.1 sq. ft)

**LiFE RESIDENTIAL**

36 Millharbour, London, E14

9JS

Sales: 020 3668 1033

Lettings: 020 3668 1030

Energy Rating: B. We aim to make our particulars both accurate and reliable. However they are not guaranteed; nor do they form part of an offer or contract. If you require clarification on any points then please contact us, especially if you're traveling some distance to view. Please note that appliances and heating systems have not been tested and therefore no warranties can be given as to their good working order.