

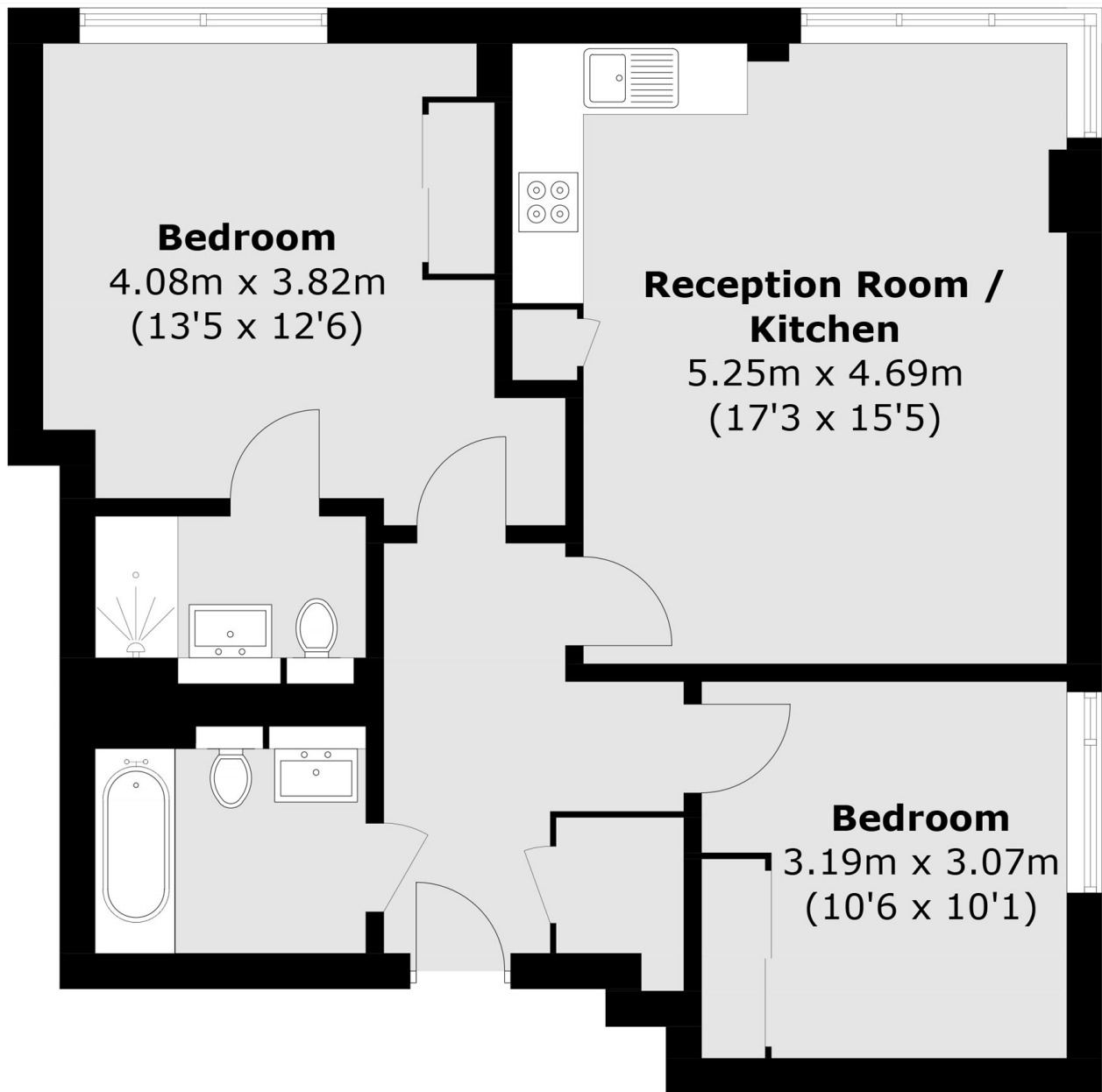


CANARY VIEW, SE10

£500,000

A contemporary property located on the ninth floor of the popular Canary View building. This two bedroom, two bathroom apartment provides a spacious, open plan reception/kitchen with modern appliances and wooden flooring. Both bedrooms offer built in storage and the primary bedroom features an en suite bathroom.

- Two Double Bedrooms
- Two Bathrooms
- Riverside Development
- 24 Hour Concierge
- No Chain
- Lease Length 981 Years



Total area (approx.): 67.8 sq. m (729.8 sq. ft)

LiFE RESIDENTIAL

36 Millharbour, London, E14

9JS

Sales: 020 3668 1033

Lettings: 020 3668 1030

Energy Rating: B. We aim to make our particulars both accurate and reliable. However they are not guaranteed; nor do they form part of an offer or contract. If you require clarification on any points then please contact us, especially if you're traveling some distance to view. Please note that appliances and heating systems have not been tested and therefore no warranties can be given as to their good working order.