

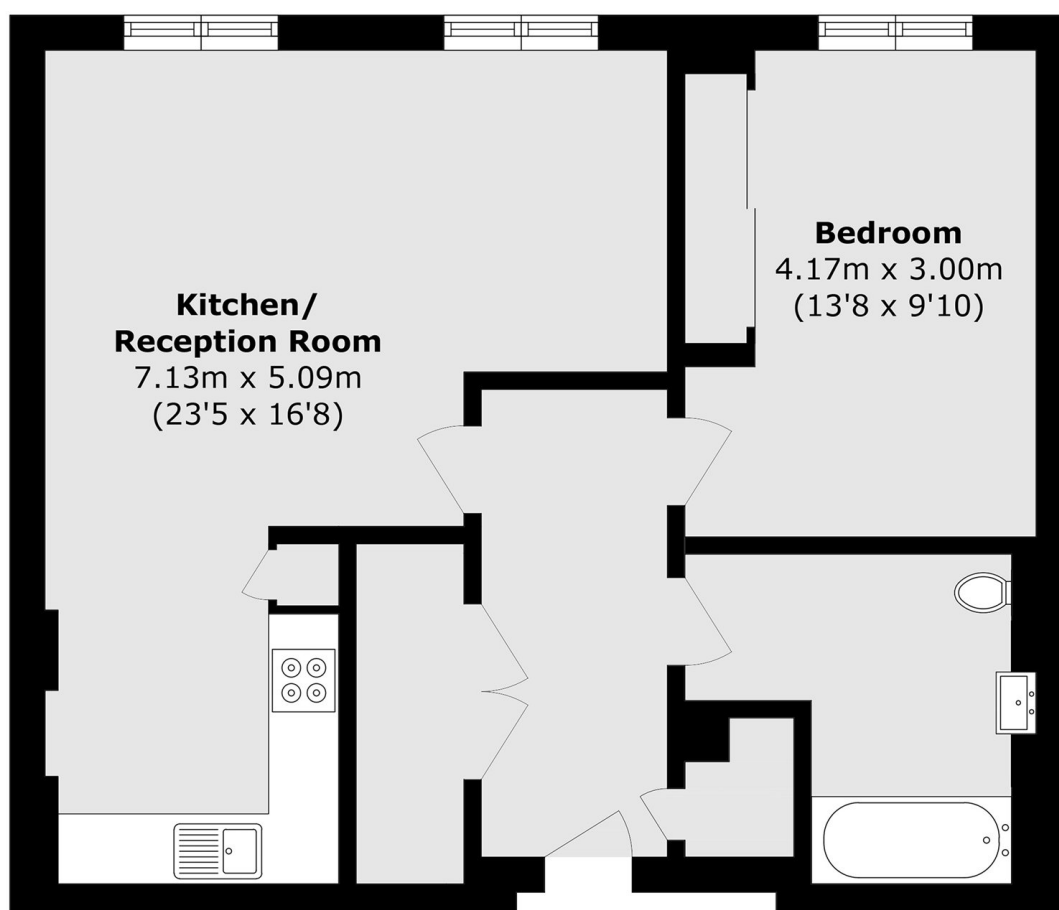


ESTHER ANNE PLACE, N1

£699,000

A spacious one double bedroom apartment set within the old Edwardian Royal Mail sorting office within the Islington Square development. This concierge serviced apartment has an open plan kitchen/living space and underfloor heating through and offers views over the communal garden.

- One Bedroom
- Concierge
- Period Conversion
- Communal Garden
- Communal Terrace
- Underfloor Heating



Total area (approx.): 59.7 sq. m (642.6 sq. ft)

LiFE RESIDENTIAL

71 Drayton Park, London, N5

1BF

Sales: 020 3838 8666

Lettings: 020 7359 4488

Energy Rating: . We aim to make our particulars both accurate and reliable. However they are not guaranteed; nor do they form part of an offer or contract. If you require clarification on any points then please contact us, especially if you're traveling some distance to view. Please note that appliances and heating systems have not been tested and therefore no warranties can be given as to their good working order.