



FLOWERS WAY, LU1

£1,150 pcm

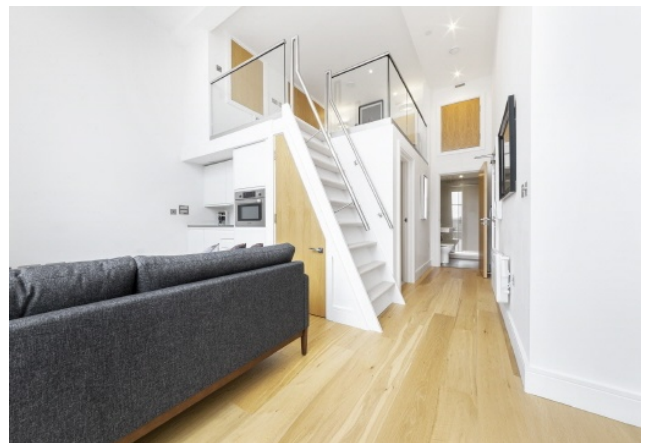
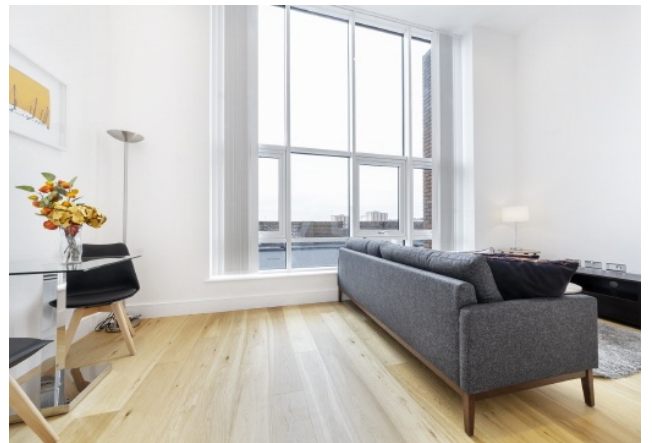
This third floor apartment features an open-plan living area with a fully integrated kitchen, high-quality furnishings, and extensive built-in storage, including a wardrobe with satin white sliding doors. It is suitable for home working or general residential use.

- 1 Bed mezzanine
- Study
- Approx 455 Sq ft / 42.3 Sq m
- Close to Town Centre and train station
- Daytime Concierge

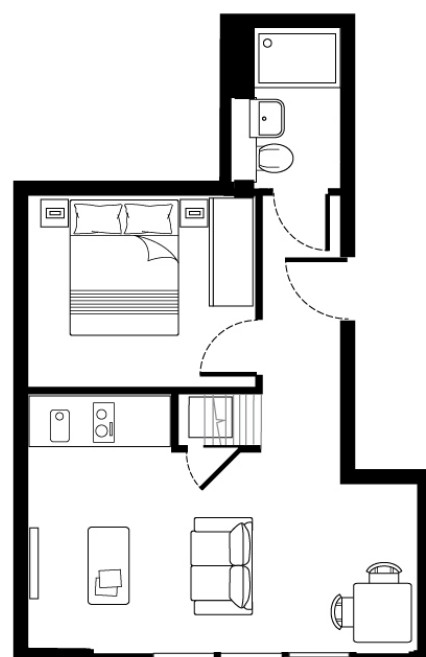
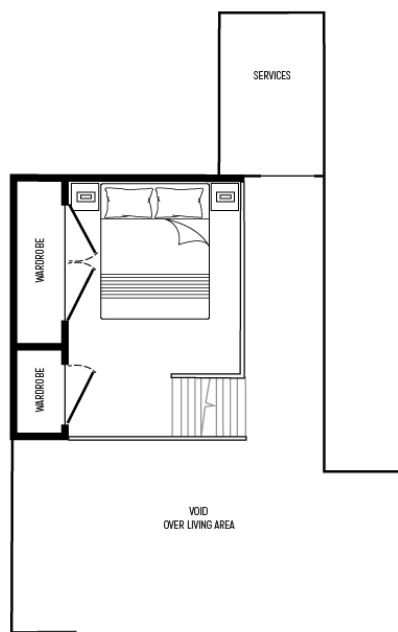


ABOUT THE HOME

Well located for commuting, with St Pancras International reachable in under 40 minutes and Luton Town Centre close by, offering a wide range of shops, bars, and restaurants. The development is also within easy reach of green spaces including Stockwood Park and Wardown Park.







LIVING/DINING AREA INC KITCHEN	3.5 x 5.3 m	11'6" x 17'4"
BEDROOM	2.6 x 3.0 m	8'6" x 9'9"
GALLERY BEDROOM	3.4 x 2.4 m	11'2" x 7'10"
LOWER AREA	32.1 SQ.M.	345 SQ.FT.
GALLERY AREA	10.2 SQ.M.	110 SQ.FT.
TOTAL AREA:	42.3 SQ.M.	455 SQ.FT.



LiFE RESIDENTIAL

71 Drayton Park, London, N5

1BF

Sales: 020 3838 8666

Lettings: 020 7359 4488

Energy Rating: D. We aim to make our particulars both accurate and reliable. However they are not guaranteed; nor do they form part of an offer or contract. If you require clarification on any points then please contact us, especially if you're traveling some distance to view. Please note that appliances and heating systems have not been tested and therefore no warranties can be given as to their good working order.