

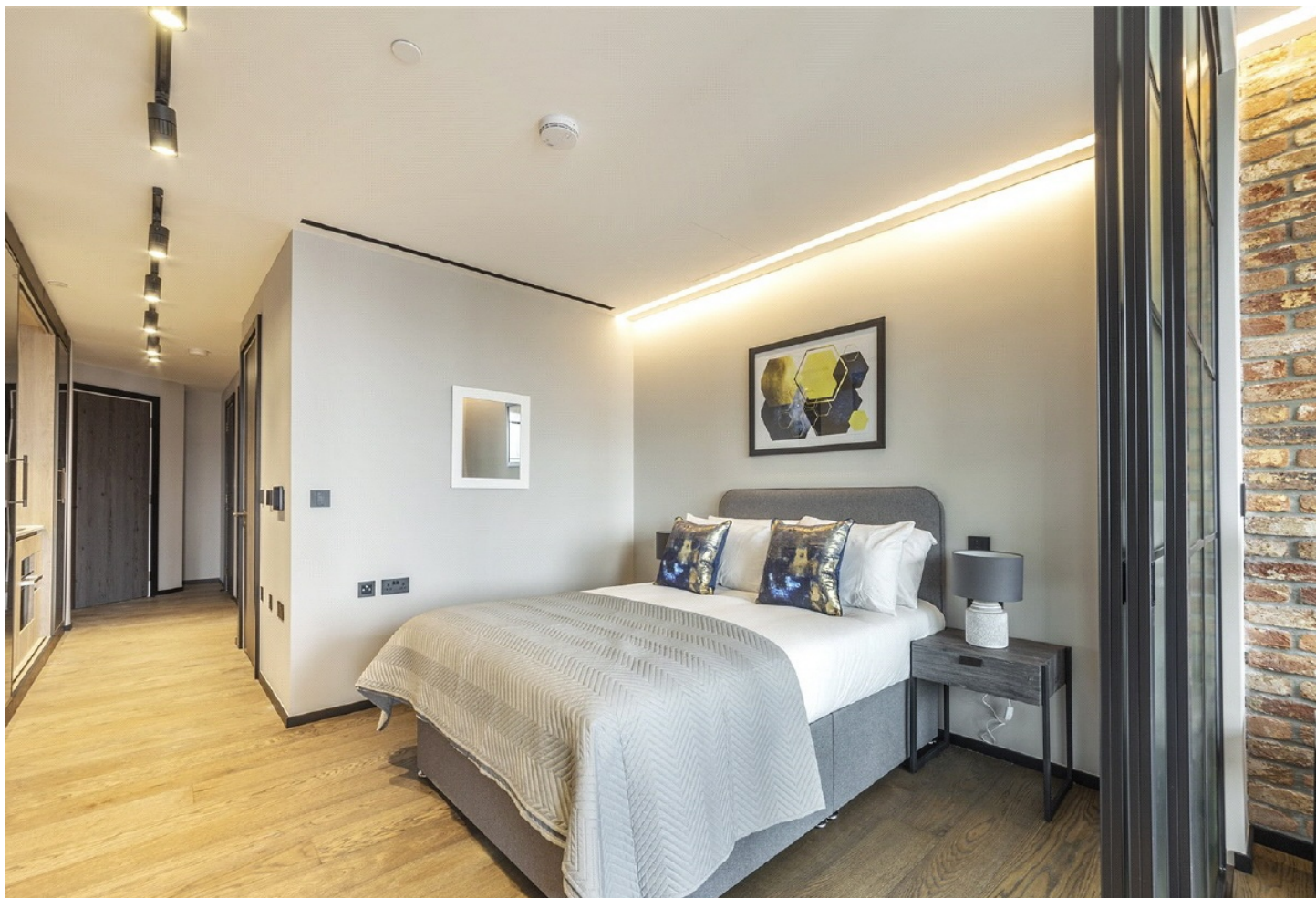


HEWETT STREET, EC2A

£2,850 pcm

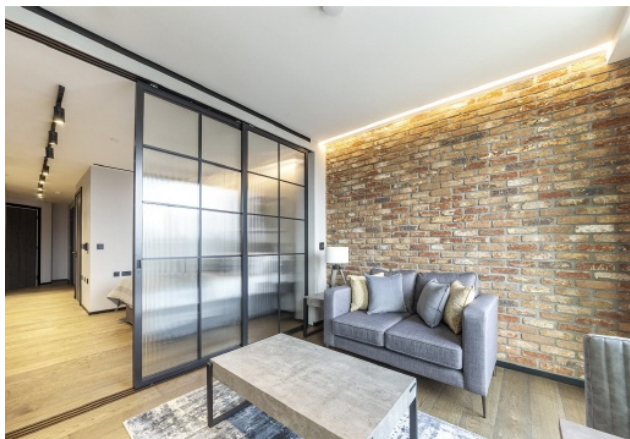
This large studio apartment is located within The Stage, a 37-storey residential development in Shoreditch, East London. The apartment is finished to a high specification, with interior design by Nicola Fontanella of Argent Design and residence management by Rhodium.

- Luxury Studio Suite
- Large balcony
- World class amenities
- Over 430 Sq. ft
- Liverpool Street
- Shoreditch Location

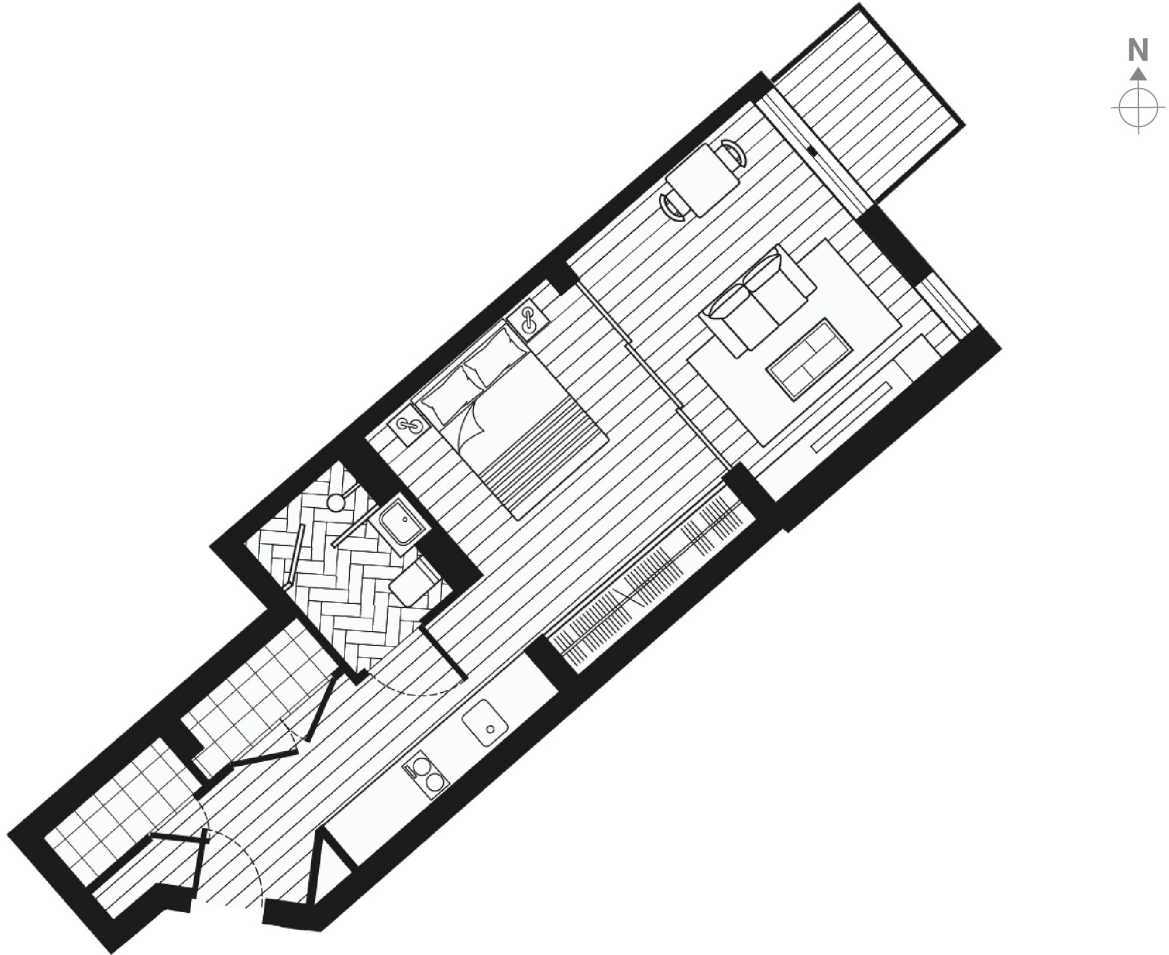


ABOUT THE HOME

The development is a five-minute walk from Liverpool Street Station, offering Underground, rail, and Overground services. Shoreditch's restaurants, cultural venues, and Spitalfields Market are all within walking distance. The site incorporates the remains of Shakespeare's Curtain Theatre (1577) and forms part of a planned cultural landmark.





1 bedroom apartment

Approximate gross internal area: 462 sq ft /43 sqm

Whilst every attempt has been made to ensure the accuracy of the floorplan contained here, measurements of doors, windows, rooms and any other items are approximate. No responsibility is taken for any error, omission, or mis-statement. This plan is for illustrative purposes only and should be used as such by any prospective purchaser. The services, systems and appliances shown have not been tested and no guarantee as to their operability or efficiency can be given.
© Copyright LiFE Residential 2021.

LiFE RESIDENTIAL

71 Drayton Park, London, N5

1BF

Sales: 020 3838 8666

Lettings: 020 7359 4488

Energy Rating: B. We aim to make our particulars both accurate and reliable. However they are not guaranteed; nor do they form part of an offer or contract. If you require clarification on any points then please contact us, especially if you're traveling some distance to view. Please note that appliances and heating systems have not been tested and therefore no warranties can be given as to their good working order.