



PLUMBERS ROW, E1

£2,800 pcm

Spacious two bedroom, two bathroom modern apartment with gym access | Located in close to Aldgate East & Whitechapel | The Colefax Building is part of The Aldgate Triangle, which includes the benefit of a 24 hour porter and security | Perfect for couples, small families or professional sharers |

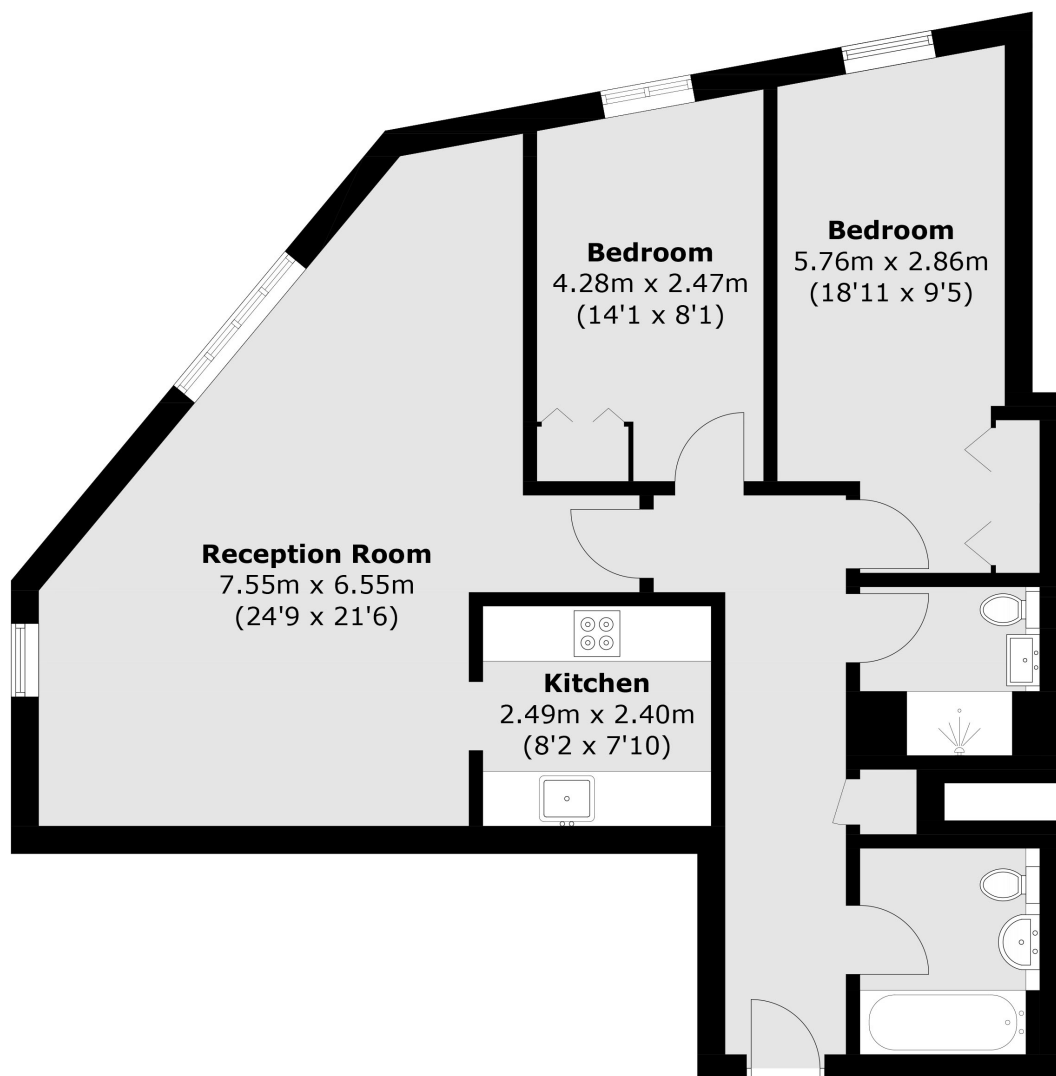


ABOUT THE HOME

The Colefax Building truly offers the best of both worlds! Tucked away from the bustling Commercial Road and Whitechapel Road, this apartment provides a peaceful retreat, yet just 50 metres from your doorstep, you're immersed in the vibrant energy of Brick Lane. This lively neighborhood is not only home to some of the finest street art you'll find anywhere in the world but also boasts a community that celebrates both the new and the old, blending rich history with exciting, modern developments. || The apartment is nestled within a sleek, purpose-built block, complete with a 24-hour concierge service to cater to your needs. Residents also enjoy access to a well-equipped gym, a sauna, and a jacuzzi. With top-notch security, you can relax knowing that entry codes throughout the building provide peace of mind. || Inside, the apartment feels like home from the moment you step







Total area (approx.): 80.6 sq. m (867.6 sq. ft)

LiFE RESIDENTIAL

71 Drayton Park, London, N5

1BF

Sales: 020 3838 8666

Lettings: 020 7359 4488

Energy Rating: D. We aim to make our particulars both accurate and reliable. However they are not guaranteed; nor do they form part of an offer or contract. If you require clarification on any points then please contact us, especially if you're traveling some distance to view. Please note that appliances and heating systems have not been tested and therefore no warranties can be given as to their good working order.