



FLOWERS WAY, LU1

£1,200 pcm

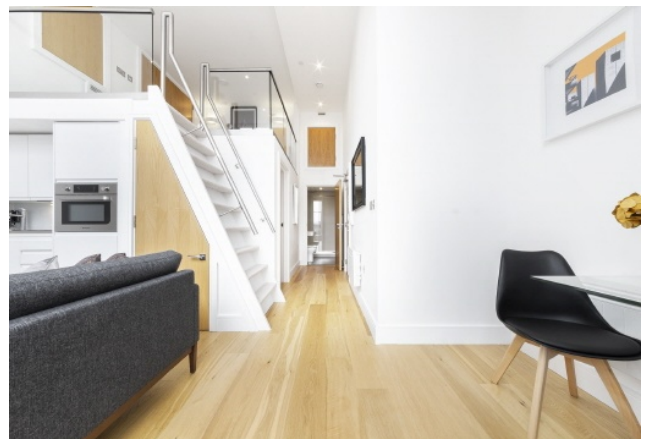
This exceptional third-floor apartment is offered furnished to a high standard and benefits from ample built-in storage, including a wardrobe with satin white sliding doors. The open-plan living area incorporates a fully integrated kitchen, creating a practical and modern living space ideal for professionals or home working. A daytime concierge service is available to

- One Bed + mezzanine
- Furnished
- Parking Available
- Lift access

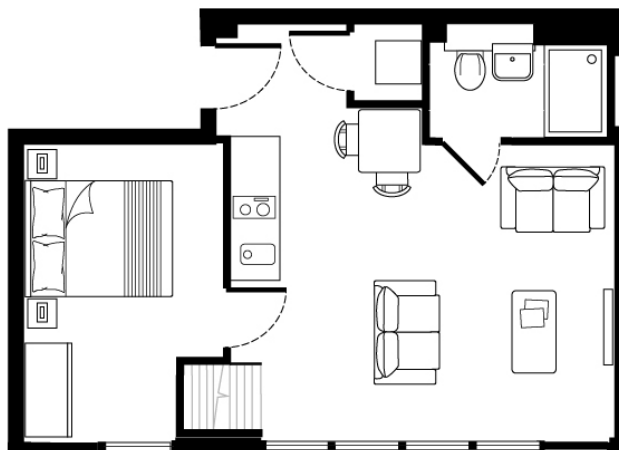
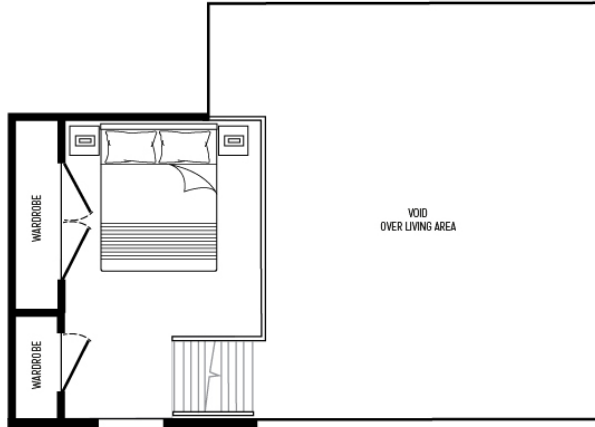


ABOUT THE HOME

The property is well positioned for commuters, with St Pancras International reachable in under 40 minutes. Luton Town Centre is close by, offering a wide selection of shops, bars, eateries, and restaurants. For those seeking green space, Stockwood Park and Wardown Park are within easy reach.







LIVING/DINING AREA INC KITCHEN	4.2 x 4.9 m	13'8" x 16'0"
BEDROOM	3.8 x 2.6 m	12'6" x 8'6"
GALLERY BEDROOM	3.7 x 2.6 m	12'2" x 8'6"
LOWER AREA	36.6 sq.m.	394 sq.ft.
GALLERY AREA	11.4 sq.m.	122 sq.ft.
TOTAL AREA:	48.0 sq.m.	516 sq.ft.



LiFE RESIDENTIAL

71 Drayton Park, London, N5

1BF

Sales: 020 3838 8666

Lettings: 020 7359 4488

Energy Rating: D. We aim to make our particulars both accurate and reliable. However they are not guaranteed; nor do they form part of an offer or contract. If you require clarification on any points then please contact us, especially if you're traveling some distance to view. Please note that appliances and heating systems have not been tested and therefore no warranties can be given as to their good working order.