



SCLATER STREET, E1

£3,650 pcm

This spacious two bedroom apartment offers a sleek kitchen, bright living space, floor-to-ceiling windows, en-suite plus separate bathroom, private balcony and rooftop terrace.

- Two Bedrooms
- Open Plan
- Lift Access
- Private Balcony
- Rooftop Terrace
- Transport Links

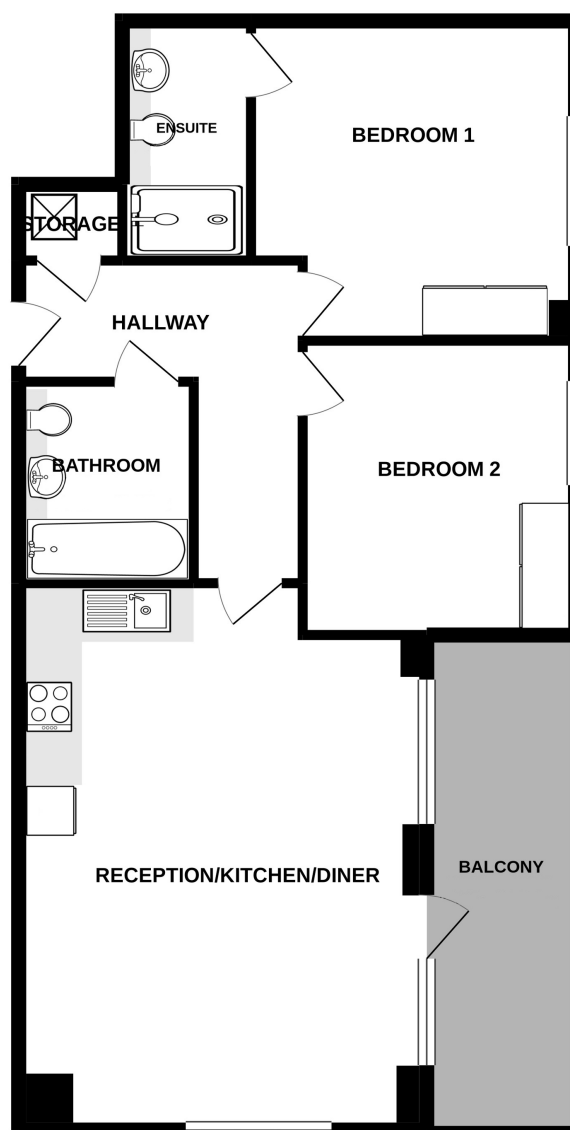


ABOUT THE HOME

Located closely to Liverpool Street Station and Shoreditch High Street Station, offering quick access into Central London and Heathrow Airport. The apartment is located near Spitalfields Market, local restaurants and cafés.







TOTAL FLOOR AREA : 798 sq.ft. (74.1 sq.m.) approx.

Whilst every attempt has been made to ensure the accuracy of the floorplan contained here, measurements of doors, windows, rooms and any other items are approximate and no responsibility is taken for any error, omission or mis-statement. This plan is for illustrative purposes only and should be used as such by any prospective purchaser. The services, systems and appliances shown have not been tested and no guarantee as to their operability or efficiency can be given.
Made with Metropix ©2020



LiFE RESIDENTIAL

71 Drayton Park, London, N5

1BF

Sales: 020 3838 8666

Lettings: 020 7359 4488

Energy Rating: B. We aim to make our particulars both accurate and reliable. However they are not guaranteed; nor do they form part of an offer or contract. If you require clarification on any points then please contact us, especially if you're traveling some distance to view. Please note that appliances and heating systems have not been tested and therefore no warranties can be given as to their good working order.