

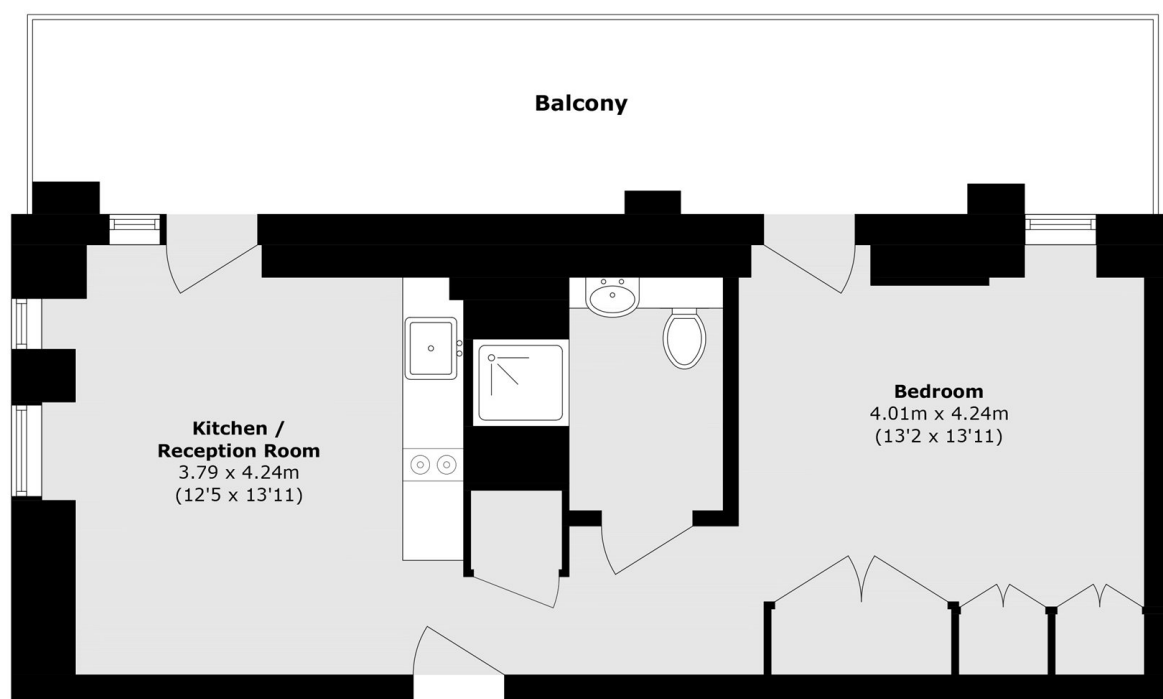


CENTURION TOWER, E16

£1,650 pcm

A 1st floor studio apartment with wood flooring, built-in storage, floor to ceiling windows and private terrace. The property has access to 24 hour concierge and communal roof terrace

- Studio Apartment
- 1st Floor
- Wood Flooring
- Built-In Storage
- Concierge
- Communal Roof Terrace



Total area (approx.): 46.0 sq. m (495.1 sq. ft)
Balcony area (approx.): 21.2 sq. m (228.1 sq. ft)

LiFE RESIDENTIAL

16 Royal Crest Avenue,
London, E16 2TQ
Sales: 020 3846 3332
Lettings: 020 3846 3311

Energy Rating: B. We aim to make our particulars both accurate and reliable. However they are not guaranteed; nor do they form part of an offer or contract. If you require clarification on any points then please contact us, especially if you're traveling some distance to view. Please note that appliances and heating systems have not been tested and therefore no warranties can be given as to their good working order.