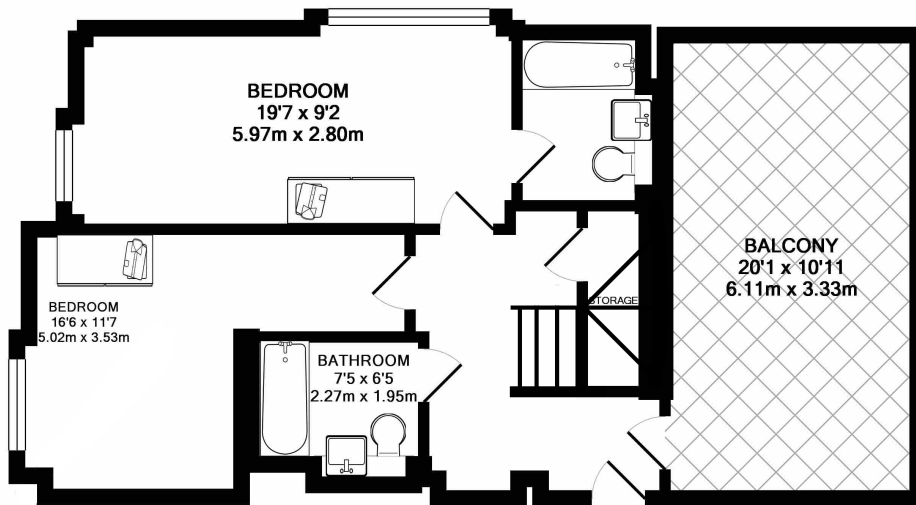


SOVEREIGN TOWER, E16

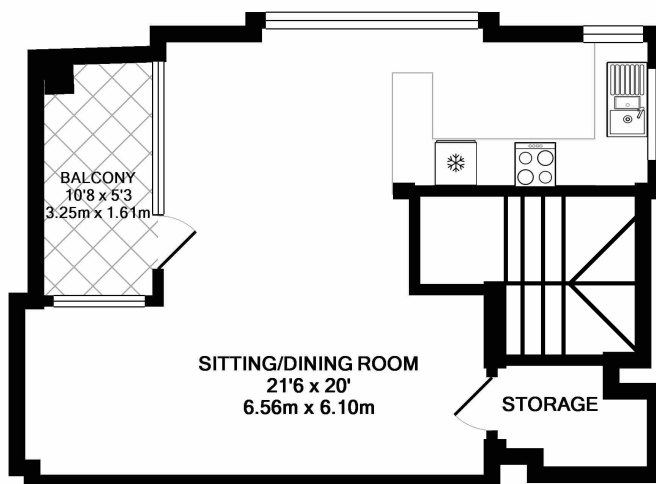
£2,750 pcm

A spacious two-bedroom, two-bathroom split-level penthouse apartment arranged over the 13th and 14th floors of the sought-after Sovereign Tower. This beautifully presented home boasts a generous open-plan living and dining area, perfectly suited to both relaxing and entertaining.

- Split Level Penthouse
- Two Double Bedrooms
- Two Bathrooms
- Large Terrace
- 13th & 14th Floor
- Concierge



GROUND FLOOR
APPROX. FLOOR
AREA 527 SQ.FT.
(49.0 SQ.M.)



1ST FLOOR
APPROX. FLOOR
AREA 460 SQ.FT.
(42.7 SQ.M.)

TOTAL APPROX. FLOOR AREA 987 SQ.FT. (91.7 SQ.M.)

Whilst every attempt has been made to ensure the accuracy of the floor plan contained here, measurements of doors, windows, rooms and any other items are approximate and no responsibility is taken for any error, omission, or mis-statement. This plan is for illustrative purposes only and should be used as such by any prospective purchaser. The services, systems and appliances shown have not been tested and no guarantee as to their operability or efficiency can be given
Made with Metropix ©2019

LiFE RESIDENTIAL

16 Royal Crest Avenue,
London, E16 2TQ
Sales: 020 3846 3332
Lettings: 020 3846 3311

Energy Rating: B. We aim to make our particulars both accurate and reliable. However they are not guaranteed; nor do they form part of an offer or contract. If you require clarification on any points then please contact us, especially if you're traveling some distance to view. Please note that appliances and heating systems have not been tested and therefore no warranties can be given as to their good working order.