

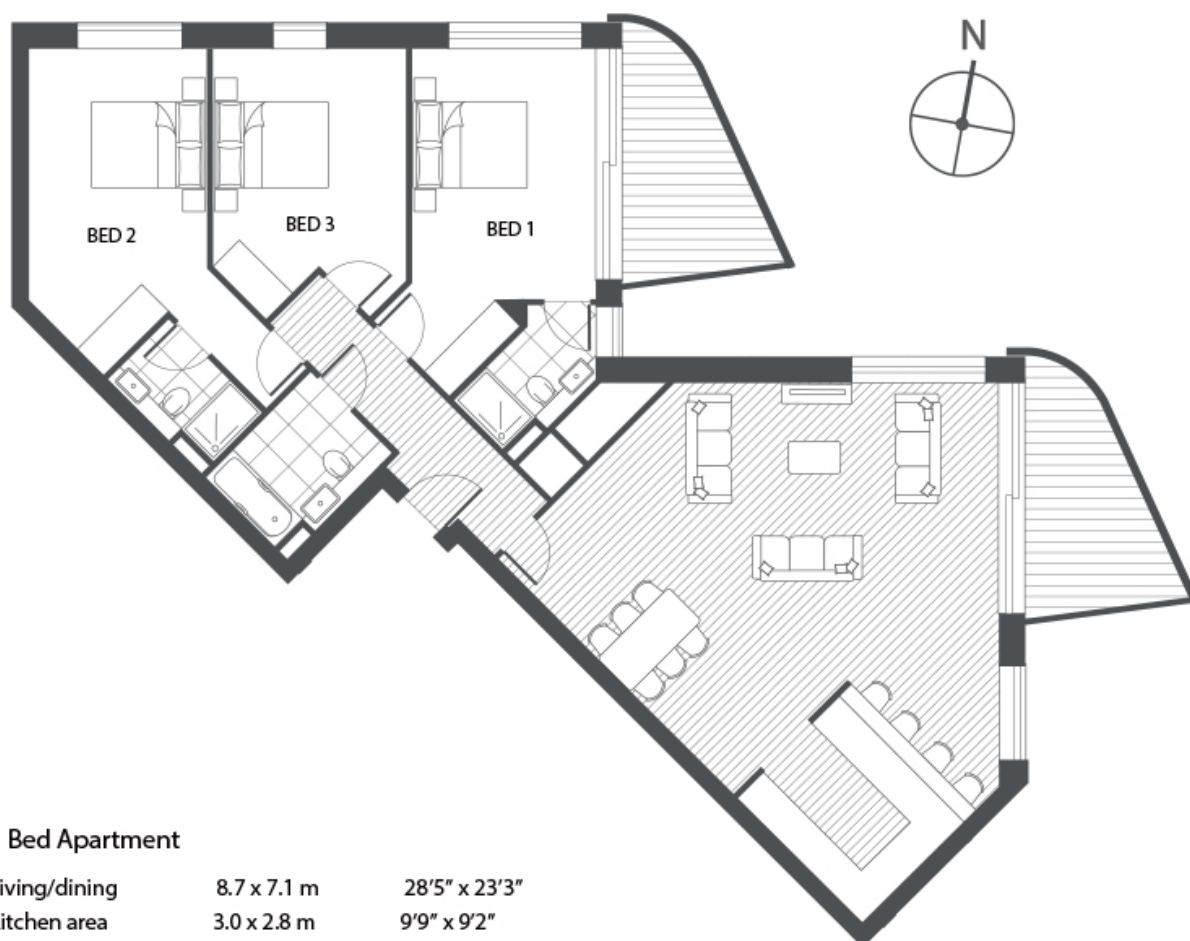


GATEWAY TOWER, E16

£3,400 pcm

Three bedroom apartment in Gateway Tower with 1,379 sq ft of internal space, city views, curvaceous interiors and two private balconies. Features spacious open plan layout and modern finish throughout. Residents benefit from 24 hour concierge and secure cycle storage.

- Three Bedrooms
- Three Bathrooms
- Open Plan Reception
- Wood Flooring
- Private Balcony
- 24 Hour Concierge



3 Bed Apartment

Living/dining	8.7 x 7.1 m	28'5" x 23'3"
Kitchen area	3.0 x 2.8 m	9'9" x 9'2"
Bedroom 1	6.0 x 3.2 m	19'8" x 10'5"
Bedroom 2	5.6 x 3.1 m	18'4" x 10'1"
Bedroom 3	4.6 x 3.3 m	15'0" x 10'9"
Balcony area	16.5 sq m	177 sq.ft.
Internal area	128.1 sq m	1379 sq ft

LiFE RESIDENTIAL

16 Royal Crest Avenue,
London, E16 2TQ
Sales: 020 3846 3332
Lettings: 020 3846 3311

Energy Rating: B. We aim to make our particulars both accurate and reliable. However they are not guaranteed; nor do they form part of an offer or contract. If you require clarification on any points then please contact us, especially if you're traveling some distance to view. Please note that appliances and heating systems have not been tested and therefore no warranties can be given as to their good working order.