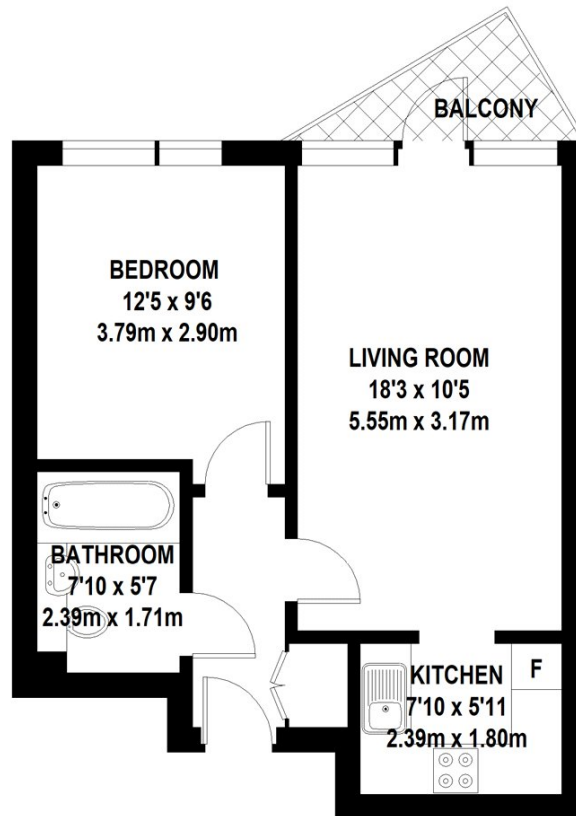


PROTON TOWER, E14

£2,000 pcm

Stunning one-bedroom apartment in a sought-after Blackwall Way development, moments from East India DLR. Features an open-plan living area with integrated kitchen, private balcony with 02 and Thames views, spacious bedroom, and modern bathroom. Rent includes water and electricity, plus gym access and 24-hour concierge.

- One Bedroom
- Residents Gym
- One Bathroom
- 24hr Concierge
- Views overlooking River Thames
- Next to East India DLR station



TOTAL APPROX. FLOOR AREA 462 SQ.FT. (42.9 SQ.M)

Whilst every attempt has been made to ensure the accuracy of the floor plan contained here, measurements of door, windows, rooms and any other items are approximate and no responsibility is taken for any error, omission, or mis-statement. This plan is for illustrative purposes only and should be used as such by any prospective purchaser. The services, systems and appliances shown have not been tested and no guarantee as to their operability or efficiency can be given

© 2023 (ID944713)

LiFE RESIDENTIAL

16 Royal Crest Avenue,
London, E16 2TQ
Sales: 020 3846 3332
Lettings: 020 3846 3311

Energy Rating: B. We aim to make our particulars both accurate and reliable. However they are not guaranteed; nor do they form part of an offer or contract. If you require clarification on any points then please contact us, especially if you're traveling some distance to view. Please note that appliances and heating systems have not been tested and therefore no warranties can be given as to their good working order.