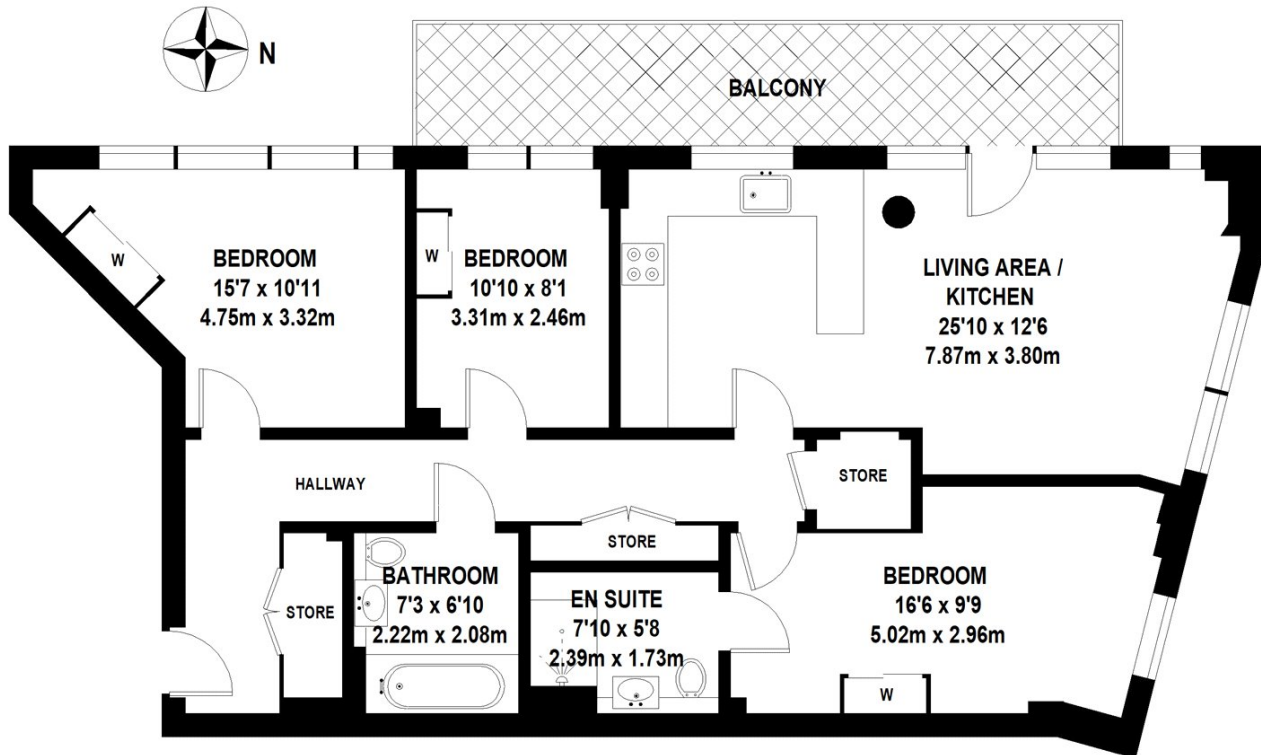


HANDBURY HOUSE, E14

£565,000

A spacious three bedroom, two bathroom property in Orchard Wharf. This apartment features dual aspect city views from the open plan kitchen/living area and private balcony, three sizable bedrooms, one of which is en suite, and a family bathroom.

- Three Bedrooms
- Two Bathrooms
- Private Balcony
- 24 Hour Concierge
- Exclusive Lounge
- Private Balcony



TOTAL APPROX. FLOOR AREA 986 SQ.FT. (91.65 SQ.M)

Whilst every attempt has been made to ensure the accuracy of the floor plan contained here, measurements of door, windows, rooms and any other items are approximate and no responsibility is taken for any error, omission, or mis-statement. This plan is for illustrative purposes only and should be used as such by any prospective purchaser. The services, systems and appliances shown have not been tested and no guarantee as to their operability or efficiency can be given

© 2023 (ID968079)

LiFE RESIDENTIAL

16 Royal Crest Avenue,
London, E16 2TQ
Sales: 020 3846 3332
Lettings: 020 3846 3311

Energy Rating: B. We aim to make our particulars both accurate and reliable. However they are not guaranteed; nor do they form part of an offer or contract. If you require clarification on any points then please contact us, especially if you're traveling some distance to view. Please note that appliances and heating systems have not been tested and therefore no warranties can be given as to their good working order.