



BURNT ASH HILL, SE12

£300,000

Chain free
Close to station
Ideal for first time buyers
Garage
Generous sized bedrooms
Energy rating: b

@marshandparsons
marshandparsons.co.uk

MARSH &
PARSONS



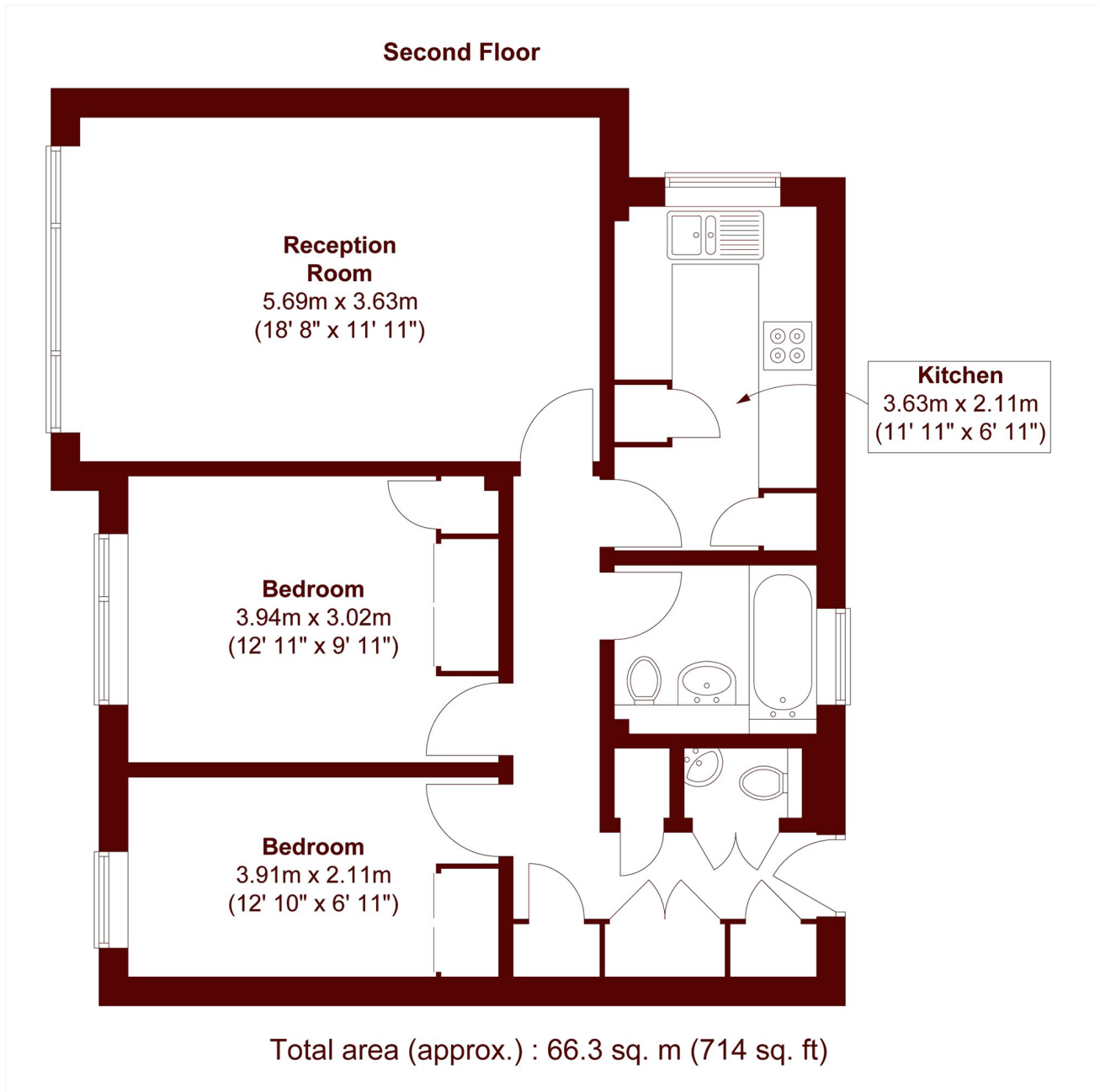
ABOUT THE PROPERTY

Situated within a well-maintained residential development on Burnt Ash Hill, this two bedroom apartment is offered to the market with no onward chain, making it an excellent opportunity for first-time purchasers. The accommodation is generously sized and comprises a bright and spacious living room, a contemporary fitted kitchen and good sized bedrooms. Additional features include a private garage, maintained communal grounds, and plenty of built-in storage space.

Conveniently located for Lee and Grove Park Stations, offering direct links into Central London, whilst also within easy reach of local shops, green spaces and highly regarded schools.



STEP INSIDE BURNT ASH HILL



Lee
020 8293 0454

Energy Rating: B We aim to make our particulars both accurate and reliable. However, they are not guaranteed; nor do they form part of an offer or contract. If you require clarification on any points then please contact us, especially if you're traveling some distance to view. Please note that appliances and heating systems have not been tested and therefore no warranties can be given as to their good working order

**MARSH &
PARSONS**