



Perry Rise, Forest Hill

Asking price £485,000

2  1 



Property Summary

Propertyworld is pleased to act as sole agents on this stunning two bedroom Edwardian ground floor maisonette with PRIVATE GARDENS and SHARE OF THE FREEHOLD. Benefiting from spacious and beautifully proportioned accommodation throughout, fabulous natural light as well as a top spec finish, this is wonderful opportunity in our opinion and demands serious attention. The property is located within easy access of lots of local amenities, beautiful Mayow Park, shops and TWO mainline stations. The details include: a fabulous kitchen with dual aspect and direct access to the private front and rear gardens, gorgeous high gloss units and integrated gas hob, oven and access into a dining room with stunning wood floor. To the front there is a beautiful lounge with a stylish yet cosy feel, including period fireplace, fitted carpet and bay window. There are TWO BEDROOMS both beautifully presented and flooded in natural light. To finish the internal areas is a beautiful bathroom which includes: three piece suite, heated towel rail and half tiled walls. The garden to rear is spacious with direct access leading from the kitchen, with abespoke timber raised beds and shed. A simply stunning property. Call Propertyworld on 0208 488 0011 to book your appointment to view.

Sydenham
020 8488 0011
www.propertyworlduk.net

Key Features

- Two bedroom maisonette
- Ground floor property
- SHARE OF FREEHOLD
- Period property
- Stunning interior
- Private front and rear gardens
- High specification finish
- Private entrance
- Gorgeous kitchen
- Separate dining room
- Plenty of storage
- Must be viewed



Our Vendor loves...

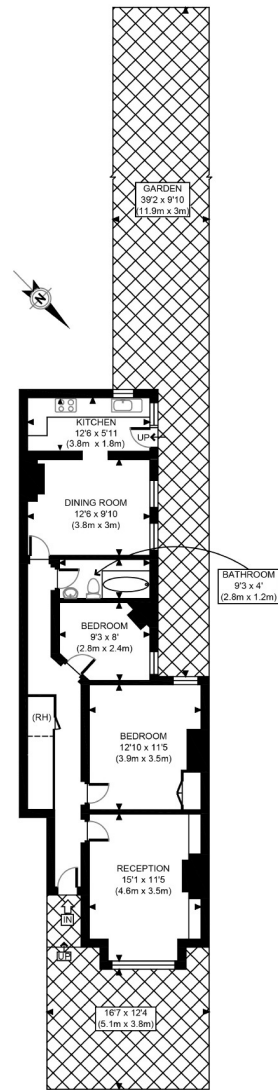
Our Vendor Loves...

"We have loved living here for the past six years and it has been the perfect first home for us. We fell in love with its original features, plus how light and spacious the rooms are. Having two reception rooms, as well as a garden to socialise in, has worked brilliantly for us - in fact we're not sure we could ever live without a dining room now!"

The sunny garden is perfect for enjoying after work and at weekends, and we love our neighbours. It's a short walk to multiple stations on different lines, so it's incredibly well connected making it easy to visit central and east London. We've loved having Mayow Park on our doorstep along with the pubs, cafés and shops in Forest Hill and Sydenham. Peckham, Dulwich, Crystal Palace and Beckenham Place Park are also all a short distance away too. We honestly couldn't recommend it more!"

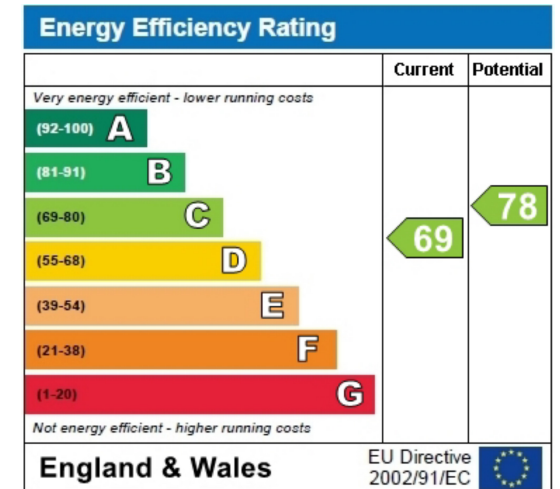






GROUND FLOOR
GROSS INTERNAL
FLOOR AREA 790 SQ FT

APPROX. GROSS INTERNAL FLOOR AREA 790 SQ FT / 73 SQM	Perry Rise
Disclaimer: Floor plan measurements are approximate and are for illustrative purposes only. While we do not doubt the floor plan accuracy and completeness, you or your advisors should conduct a careful, independent investigation of the property in respect of monetary valuation	18/03/22 photoplan



These particulars, whilst believed to be accurate are set out as a general outline only for guidance and do not constitute any part of an offer or contract. Intending purchasers should not rely on them as statements of representation of fact, but must satisfy themselves by inspection or otherwise as to their accuracy. No person in this company's employment has the authority to make or give any representation or warranty in respect of the property.