



Sydenham Park Road,

Asking price £425,000

3  1 

Property Summary

Propertyworld is pleased to offer this fabulous three bedroom flat with PRIVATE GARDEN to the sales market. Flooded with light and spread over two floors, the property benefits from spacious, beautifully proportioned and versatile accommodation throughout. The property is located on a popular residential road within easy walking distance to the centre of Forest Hill with its array of cafes, restaurants, shops and other amenities such as the library and swimming pool. The property includes but is not confined to: a gorgeous double reception room measuring 7.5 x 3.2 metres, with lounge to front and dining space to rear, bespoke TV and media unit, neutral decor, high spec laminate flooring and a beautiful outlook over the rear garden. The recently renovated kitchen is fab with an extensive range of wall and base units, oak worktop, integrated appliances plus a pantry. On the first floor there are three beautifully presented bedrooms and family bathroom with three piece suite and shower. The PRIVATE rear garden which measures 19 metres x 7.5 metres is really spacious, mainly laid lawn with a small patio area to rear and two sheds.

Unusually large, Fabulous location. Beautifully presented. Must be viewed. Call Propertyworld on 0208 488 0011 now

Key Features

- Three bedroom flat
- Private garden
- Incredibly spacious
- Split level
- Close to Forest Hill
- Flooded with light
- Beautifully presented
- Modern kitchen and bathroom
- Lots of storage
- Fabulous location
- Ideal for first time buyers
- Must be viewed

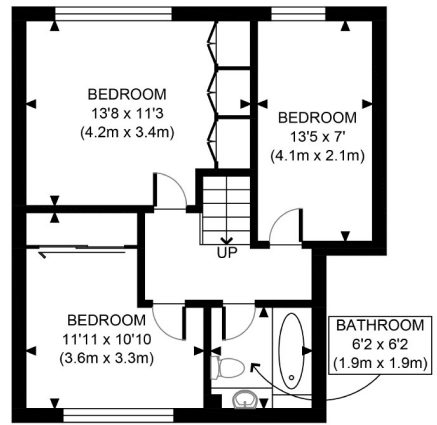
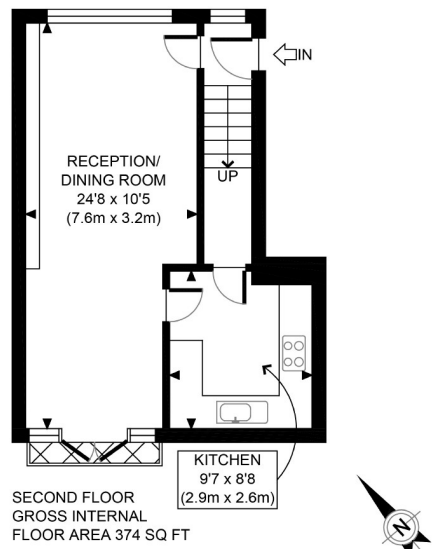
Our Vendor loves...

Our Vendors Loves...

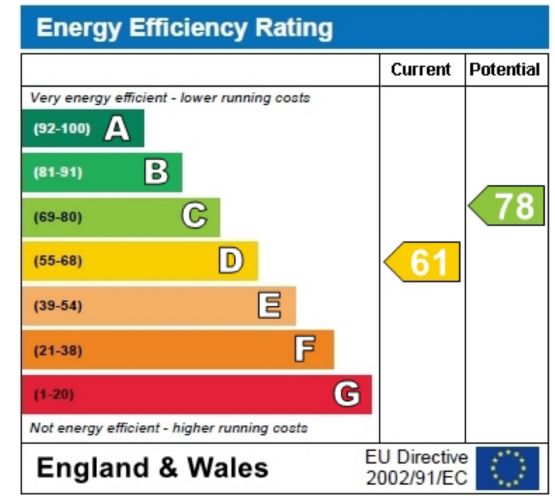
"This has been a wonderful place to live - it's where we started and grew our family. The light is amazing, the inside temperature is lovely all year round, and seeing the green of trees out of each window is beautiful. The whole family have loved having such a large garden which is perfect for playing, entertaining and a real haven when taking a break when working from home. The neighbours and surrounding area are fantastic, with great schools, amenities and a real sense of community."







APPROX. GROSS INTERNAL FLOOR AREA 834 SQ FT / 77 SQM	Sydenham Park Road
Disclaimer: Floor plan measurements are approximate and are for illustrative purposes only. While we do not doubt the floor plan accuracy and completeness, you or your advisors should conduct a careful, independent investigation of the property in respect of monetary valuation	date 23/05/22
	photoplan



These particulars, whilst believed to be accurate are set out as a general outline only for guidance and do not constitute any part of an offer or contract. Intending purchasers should not rely on them as statements of representation of fact, but must satisfy themselves by inspection or otherwise as to their accuracy. No person in this company's employment has the authority to make or give any representation or warranty in respect of the property.